

30 Years of Historic Preservation in Henry County

Henry County Historic Preservation Commission

Preserve Iowa Summit

June 7, 2024

Presenters

- Joel Garretson – chair of Henry Co HPC
- Caroline Lehman – vice chair of Henry Co HPC
- Rebecca Lawin McCarley, SPARK Consulting – consultant for several projects with Henry Co HPC
- Pat White – member of Henry Co HPC

Joel Garretson

- chairperson of Henry Co HPC
- member of HPC since 2010
- owner of East Grove Farms
- Garretson family farm since 1837



Henry County Historic Preservation Commission

- organized at end of 1993 – commissioners appointed by county in January 1994
- first members appointed by Henry County Board of Supervisors:
Donald Young, R.L. Chrisinger, Herb Hult, Gwen Moore, Wayne Moore, Ned Ratekin, and Orlendes “Pat” Ross

Henry County Historic Preservation Commission

- local ordinance establishes mission and scope of commission activities
- promote the educational, cultural economic, and general welfare of the public through the recognition, enhancement, and perpetuation of sites and districts of historic and cultural significance

Henry County Historic Preservation Commission

- conduct studies for the identification and designation of buildings, structures, or areas as historic properties, historic sites, or historic districts
- make recommendations for listing of sites on National Register of Historic Places
- other powers

Henry County Historic Preservation Commission

- buildings, structures, and areas within Henry Co, including those located in cities, except those within cities that have a historic preservation commission (MP)
- became a Certified Local Government (CLG), certified by National Park Service through SHPO

Henry County Historic Preservation Commission

- Representatives from different towns and areas in the county
- current members: Joel Garretson, Caroline Lehman, Larry D. Roth, Mary Savage, Pat White, Chad Brousseau, Cathie Shreiner, Judy Rawson, Johanna Crawford, Martha Francy

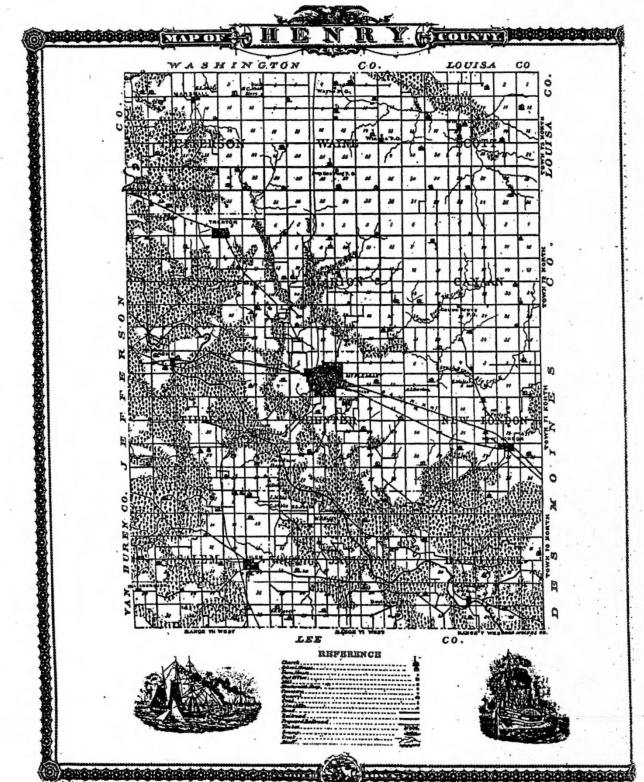
Henry County Historic Preservation Commission

- Initial partnerships with local museums and organizations/people in county
- Initial projects – see need for funding
- Utilization of NPS/SHPO grants
- County funding established – current annual allocation of \$11,000 as budget for commission activities / grant match

Planning for Preservation

- Typical first project
- Completed in 1995-1996 with consultant Molly Myers Naumann
- Public input on historic preservation
- Basic research to identify themes/sites

A REPORT ON A
PLANNING FOR PRESERVATION PROJECT
FOR



HENRY COUNTY, IOWA

Planning for Preservation

- Five historic contexts identified for Henry County: Farms and Farmsteads, Transportation, Mills, Swedish Heritage in Wayne Twp, and Society of Friends in Salem
- Recommendations for future areas of research, survey, and nomination

Initial survey project

- chose to begin with project related to Swedish Heritage in Wayne Twp – interest with local pride in heritage
- survey of Swedish Heritage in Swedesburg and Wayne Twp completed in 1996-97 with consultant Molly Myers Naumann



Initial survey project

- Survey recorded 19 farmsteads and 48 sites in Swedesburg – entire town
- 1867 to 1941
- Recommended MPD nomination and individual properties

AN ARCHITECTURAL & HISTORICAL SURVEY
OF THE
SWEDISH HERITAGE OF WAYNE TOWNSHIP
HENRY COUNTY, IOWA
1864-c.1941

Prepared for the
Henry County Historic Preservation Commission
C.L.G. Grant #19-96-11102-008

Prepared by
Molly Myers Naumann
Principal Investigator
August 1997

The Swedish Heritage of Wayne Township

- Historic context nominated in MPD
- 5 properties listed in area in 1999:
 - Swedesburg Commercial Historic District
 - Swedish Evangelical Lutheran Church
 - Red Ball Garage
 - John Hultquist House
 - Charles E. Hult Summer Kitchen

NPS Form 10-900-b (June 1991) OMB No. 1024-0018

Compl JUN 1 1999

United States Department of the Interior
National Park Service

**National Register of Historic Places
Multiple Property Documentation Form**

RECEIVED 2280
JUN 18 1999
NAT. REGISTER OF HISTORIC PLACES
NATIONAL PARK SERVICE

This form is used for documenting multiple property groups relating to one or several historic events, persons, or places. Complete each item by entering the requested information. For additional space, use continuation sheets (Form 10-900-a). Use a typewriter, word processor, or computer to complete all items.

New Submission Amended Submission

A. Name of Multiple Property Listing

Historical and Architectural Resources of Henry County, IA

B. Associated Historic Contexts

(Name each associated historic context, identifying theme, geographical area, and chronological period for each.)

The Swedish Heritage of Wayne Township, Henry County, IA: 1864-c.1945

C. Form Prepared by

name/title Molly Myers Naumann, Consultant

organization Henry County Historic Preservation Commission date March 1999

street & number 167 West Alta Vista telephone 515-682-2743

city or town Ottumwa state IA zip code 52501-1437

D. Certification

As the designated authority under the National Historic Preservation Act of 1966, as amended, I hereby certify that this documentation form meets the National Register documentation standards and sets forth requirements for the listing of related properties consistent with the National Register criteria. This submission meets the procedural and professional requirements set forth in 36 CFR Part 60 and the Secretary of the Interior's Standards and Guidelines for Archeology and Historic Preservation. (See continuation sheet for additional comments.)

Patricia Ohl Kim DSHP 6-10-99
Signature and title of certifying official Date

STATE HISTORICAL SOCIETY OF IOWA

State or Federal agency and bureau

I hereby certify that this multiple property documentation form has been approved by the National Register as a basis for evaluating related properties for listing in the National Register.

Edson H. Beall 7-15-99
Signature of the Keeper Date of Action

Caroline Lehman

- vice chairperson of Henry Co HPC
- member of HPC for over 20 years
- active with Dover Museum in New London



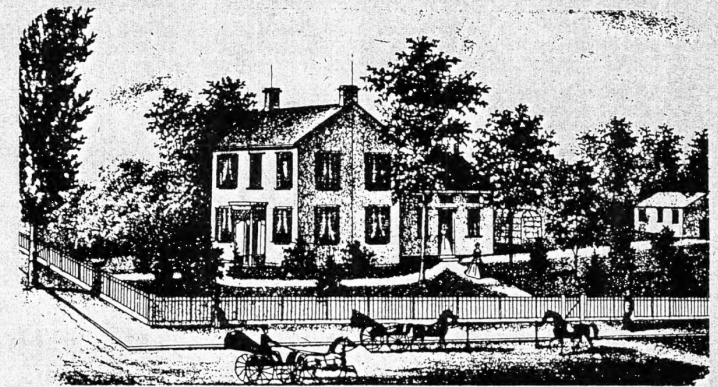
New London / Lowell survey project

- Second survey project for commission – completed in 2000-2001 with consultant Molly Myers Naumann
- Focus on transportation in southeastern Henry County – towns of New London and Lowell plus 3 mile radius
- Survey of sites specifically related to one of four types of transportation

New London / Lowell survey project

- Volunteer work
- Consultant work
- 58 sites in New London,
3 nearby, 7 sites in Lowell,
2 on Agency Rd
- Report – context, survey
results, recommendations
- 3 properties listed on
National Register in 2003

AN
ARCHITECTURAL & HISTORICAL
SURVEY OF THE
NEW LONDON & LOWELL AREAS,
HENRY COUNTY, IA
1833-1951



RESIDENCE of Dr. J.H. Philpott, New London, Iowa, from the 1870 ATLAS OF HENRY COUNTY.

Prepared for the
Henry County Historic Preservation Commission
And the State Historical Society of Iowa
CLG Grant # 20-00.005

Prepared by
Molly Myers Naumann
Consultant
June 2001

New London / Lowell nominations

- 4 properties listed on National Register in 2003
 - Melcher Pottery and Dennis Melcher House
 - John and Lavina Bangs House
 - McClellan's General Store
 - Smith and Weller Building



Education and interpretation

- Launch of sign program in 2003 – document historic sites and events
- Information from research on history of abandoned towns
- 19 signs for abandoned towns and 4 sites by 2004



Education and interpretation

- Signs in partnership with county engineer for fabrication
- Words and funding by HCHPC
- Erection by county
- Brown signs – 24” by 24”
- Over 30 signs total



Education and interpretation

Tours of historic sites

- Walking tour of Swedesburg
- Walking tour of Salem
- Driving tour of rural sites in southwest and west Henry County
- Driving tour of abandoned towns
- Keys to successful tours

6 Mt. Pleasant News Thursday, May 19, 1994

Southeast Iowa

National Historic Preservation Month

Swedesburg hosts walking tour Saturday

By John Slocas
News editor

SWEDESBURG, Iowa — Area residents are being encouraged to participate in a historic tour of the community Swedesburg Saturday, May 21, in observance of National Historic Preservation Month.

The tour includes a number of landmarks of interest from the 130-year history of the village of Swedesburg. Members of the Swedish Heritage Society will be at each location to provide information and to assist visitors in the tour.

The tour begins at the Swedesburg Academy/Parish Hall and ends at the Swedish-American Museum, where refreshments and tours of exhibits are available.

There is no admission charge to the museum, but donations are accepted. Those participating in the tour should note that the private homes of Swedesburg residents are not open during this tour.

The purpose of the Henry County Historic Preservation Commission is to safeguard Henry County's historic, aesthetic and cultural heritage by preserving sites and districts of historic and cultural significance, and to foster pride in the legacy of beauty and achievements of the past.

The mission of the Swedish Heritage Society is to create a community with pride in its Swedish-American heritage and a desire to interpret the significance of that heritage for present and future descendants.

The purpose of the society is to harvest from the past that which gives meaning to the present and promise to the future.

The National Trust for Historic Preservation's mission is to foster an appreciation of the diverse character and meaning of the American cultural heritage and to preserve and revitalize the livability of our communities by saving America's historic environments.

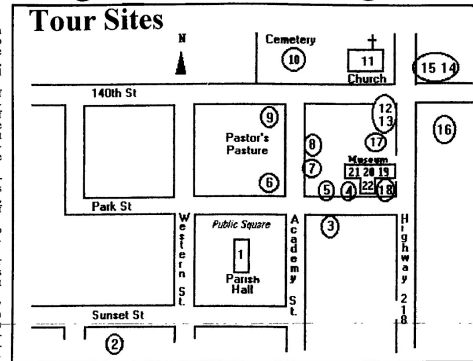
The sites along the tour (as noted on the map) include the following:

1. **Swedesburg Academy/Parish Hall** - What Hakan Olson designed Swedesburg in 1875 he wanted this site in the public square to be for a women's academy. The square was acquired by the church in 1894 and an academy for advanced study was built in 1898. The building still stands with several alterations and additions.

2. **Casket maker and undertaker** - P. L. Anderson who served as an undertaker for Swedesburg in the 1880's built caskets in this barn. Casket ornaments continue to be discovered in the building.

3. **First Doctor's Office** - Dr. John Porter and Dr. Schiller, partners, settled here in 1874. Other doctors, some at this location, were McCaig, Gardner, Nordgren, Horton Peterson, Roy Peterson, Donlon, Pfaff. The doctor's office at this site burned during the occupancy of Dr. McCaw.

4. **Doctor's Office** - Sm 11 building here housed doctor including Dr. Roy Peterson. Building also housed a barber shop. Barbers included John Bankruff, Hero Larson, Arthur Fisher, and Hilbert Larson.



5. **Sam White's general store** - Sam White built his general store on this site in 1881. The proprietorship passed to C.E. Stephenson & Co. in 1890, to John Anderson and C.O. Nelson as partners in 1892, to Anderson alone in 1903, and to Nels Munson in 1904. In 1902 the store operation moved to the ground floor of the new Odd Fellows building on the highway corner.

In 1904 the old White store building was moved to its highway location next to the Odd Fellows lodge and used as additional store area and storage. After Munson, the store was operated by Ed Lauger & Sons and in 1919 became the Farmers Union Exchange. When the new Farmers Union Exchange building was built in 1928, the old White store building was moved to its present location on the grounds of the Museum.

6. **Prairie Hall Lodge** - A men's fellowship, the Prairie Hall Association, purchased this site as a place to build a meeting hall in 1875, and in 1880 built a two story building known as the Prairie Hall. The Odd Fellows Star of Hope Lodge #347, originally organized in 1876, met in an upstairs room of the building for many years and eventually purchased the building. (Many members of the Odd Fellows Lodge were not Swedish.)

Prairie Hall at one time housed a restaurant operated by John Bankruff and Hero Larsen (also known as Hero Larson). The building burned in 1892.

7. **Hardware store** - The Swedish tinmith Charles Bergh built a shop on this site in the early 1870's. His tinmith and hardware business was on the first level and living quarters for him and his wife Caroline were on the second floor.

The father of Florence Bergh, now living in Mt. Pleasant, was born in 1870's. His tinmith and hardware business was on the first level and living quarters for him and his wife Caroline were on the second floor.

14. **Blacksmith/Wagon Maker** - This site included a large building housing several shops, with some shops in adjacent small buildings. Blacksmiths included Peterson,

moved to its present site on the museum grounds in 1904 by the son of Nels Munson's store, then Lauger and Sons store, and then part of the Farmers Union Exchange.

8. **Millinery Shop** - The Loder sisters operated a millinery shop at this location.

9. **Parsonage** - The first parsonage, little more than a shack, was built at this site by Hakan Olson in 1870. The current parsonage is the fourth home to be built here for the church's pastors.

10. **Church Cemetery** - Swedesburg Lutheran Church - The church congregation was organized in 1860 and the first church was built in 1866. The second church, built in 1899, was known by its magnificent steeple. That "big white church in the little white town" was destroyed by fire in 1927. Building on the new brick church began immediately, and the new church was dedicated in the fall of 1928. All three churches were built at the same location.

12. **First General Store** - The first general store was opened by Otto Abrahamson in 1874. Later proprietors included Abrahamson 1877, Olof Peterson, 1881, Ed Lauger, 1888, Johnson and Swanson, 1891, John Olson, 1893, Waloff Lindsten, 1899, Waloff and Joe Lindsten, 1900 until 1913. A shoemaker's shop near the original store was operated by the Froid brothers and later by C.J. Anderson.

13. **Farmer's Savings Bank** - A small corner of Lindsten's property became the site of the Farmer's Savings Bank built in 1915. Bank owners included Ed Stucky and Carl Strmer. The bank closed in 1927 and moved to Oids. The building is now occupied by the Swedesburg Post Office.

15. **Blacksmith/Wagon Maker** - This site included a large building housing several shops, with some shops in adjacent small buildings. Blacksmiths included Peterson,

Liljedahl, and Frome. John Sandburg was a wagon maker. There have been businesses continuously on this site from the early 1870's to the present. The blacksmith location became Darnell and McDowell's auto garage. Lee Hagaman's Red Ball Garage, then the Hagaman Brothers Garage. A new garage was built in 1929, now Neil's Garage.

16. **First Swedesburg Residence** - C.E. Halt built this first permanent Swedesburg residence in 1867. The Halt home provided lodging for travelers and for arrivals to Swedesburg. The home has been continuously occupied by members of the Halt family since it was built.

17. **Dress Maker's Shop/First store** - Hedvig Hultquist's dress maker's shop was housed at this site in the home that had been Swedesburg's first "store" in the late 1860's. Per Larson sold basic necessities from his home here.

18. **Star of Hope Odd Fellow Lodge/General Store** - The Odd Fellows Lodge building at this corner was built in 1902, with lodge rooms on the second floor and store facilities at the street level. This store space, together with White's old store building which had been moved to a site next door, was operated as a general store by Nels Munson in 1902 and then Ed Lauger and Sons in 1913, and was acquired by the Farmers Union Exchange in 1919. The Lodge building was moved to Oids after the lodge had a falling out with the Swedesburg church in 1928. (Some members also moved to Oids.)

19. **Farmer's Union Exchange** - The Exchange, a cooperative general store, occupied the Odd Fellows Lodge and the adjacent

White's old store building from 1919 until the Lodge was moved in 1928. In the same year the Exchange moved White's old building to its present location and in its place built a new store, now the museum building. When the Farmers Union Exchange closed in 1976, the Exchange properties at this site consisted of the "new" store building, White's old building, Bergh's old shop, a garage, and other small buildings and sheds. After 3 or 4 owners, these buildings were purchased by the Swedish Heritage Society Foundation in 1992. The Society refurbished and remodeled the 1928 store building, opening it that year as the Swedish-American Museum.

20. **White's Store Today** - This old store building was built in 1881 at a site on Academy Street. It was first moved to the site of the present museum on the highway in 1904, and moved to its present location when the new Farmer's Union Exchange building was built in 1928. This building was included in the complex of buildings purchased by the Society in 1992. The building was refurbished during 1993 and opened as part of the museum, displaying general store merchandise and other artifacts.

21. **Bergh's Store Today** - After Charles Bergh left his tin shop in 1880, the building was used by Sam White as part of his general store in 1881 and possibly moved to its present site in 1903 when the store proprietors, Anderson and Nelson, moved their buildings to the highway location. The stairway and second floor still display finished aspects of the living quarters there. This building has been selected for restoration, the last of the four purchased by the Society. The restoration will be designed to commemorate the role of the "buckster" or "yankoo peddler" who at the turn of the century provided rural families by wagon with goods from the general store. The building will also display an exhibit on the history of the highway.

22. **Swedish Stage** - In 1992 the Society transformed the old double garage on this site into a model Swedish country stage of the 19th century. Many artifacts of domestic life in old Sweden, brought to America by early immigrants, are displayed in the stage. This building was included in the complex of buildings purchased by the Society in 1992.

MAYTAG MONTH SALE

ALL EXTRA FEATURES AT NO EXTRA COST!

LIMITED QUANTITIES & MODEL SELECTION
FIRST COME - FIRST SERVE!

Get More for Less on Maytag Dependable Care™ Washers & Dryers

\$70

IN EXTRA FEATURES AT NO EXTRA COST!

MAYTAG DRYER

MODEL LDR404

- Commercially proven
- Heavy Duty, Super Capacity
- 10 Year Warranty

\$80

IN EXTRA FEATURES AT NO EXTRA COST!

MAYTAG WASHER

MODEL L4700X

- Lasts longer than any other brand
- Heavy Duty, Super Capacity
- 10 Year Transmision Warranty INCLUDED!

Consumer Rated #1 Washers & Dryers

EVERY MAYTAG IS ON SALE!

MAYTAG

Rebecca Lawin McCarley

- historic preservation consultant with SPARK Consulting
- completed several survey and nomination projects with HPC since 2004



Types of survey/nomination projects

- Reconnaissance survey projects
- Intensive level survey projects
- Evaluations of individual properties –
Iowa Site Inventory forms
- Nominations to National Register of
Historic Places – individual and
historic districts

Survey and nomination projects

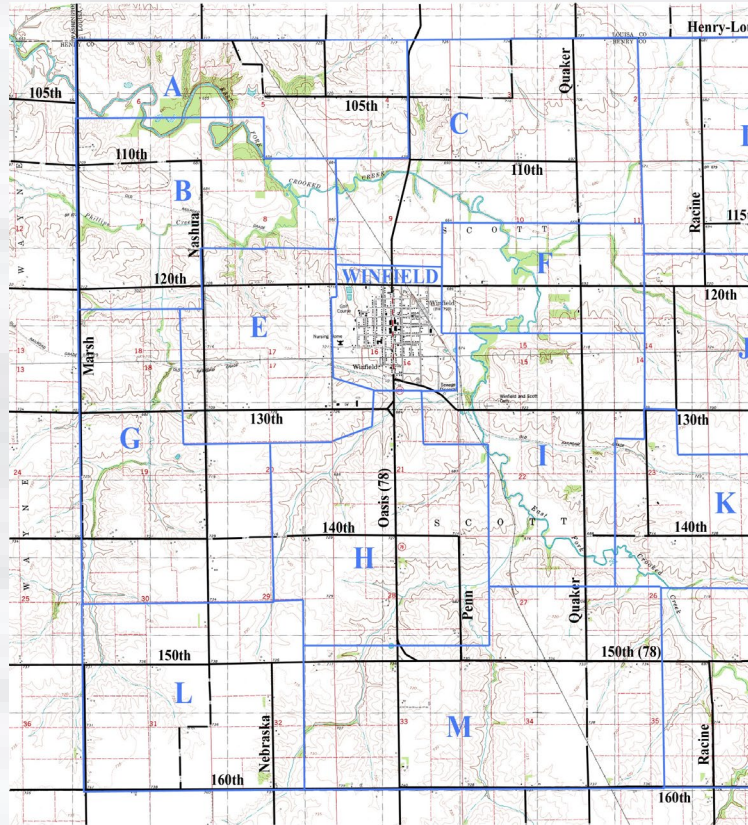
- Selected with local interest in project
- Typically work with a consultant
- Grant and/or local funding, with volunteer match in hours/mileage
- Certified Local Government grants
- Historic Resources Development Program grants (5% of REAP program)
- Budget allocation from Henry County

Reconnaissance Level Surveys

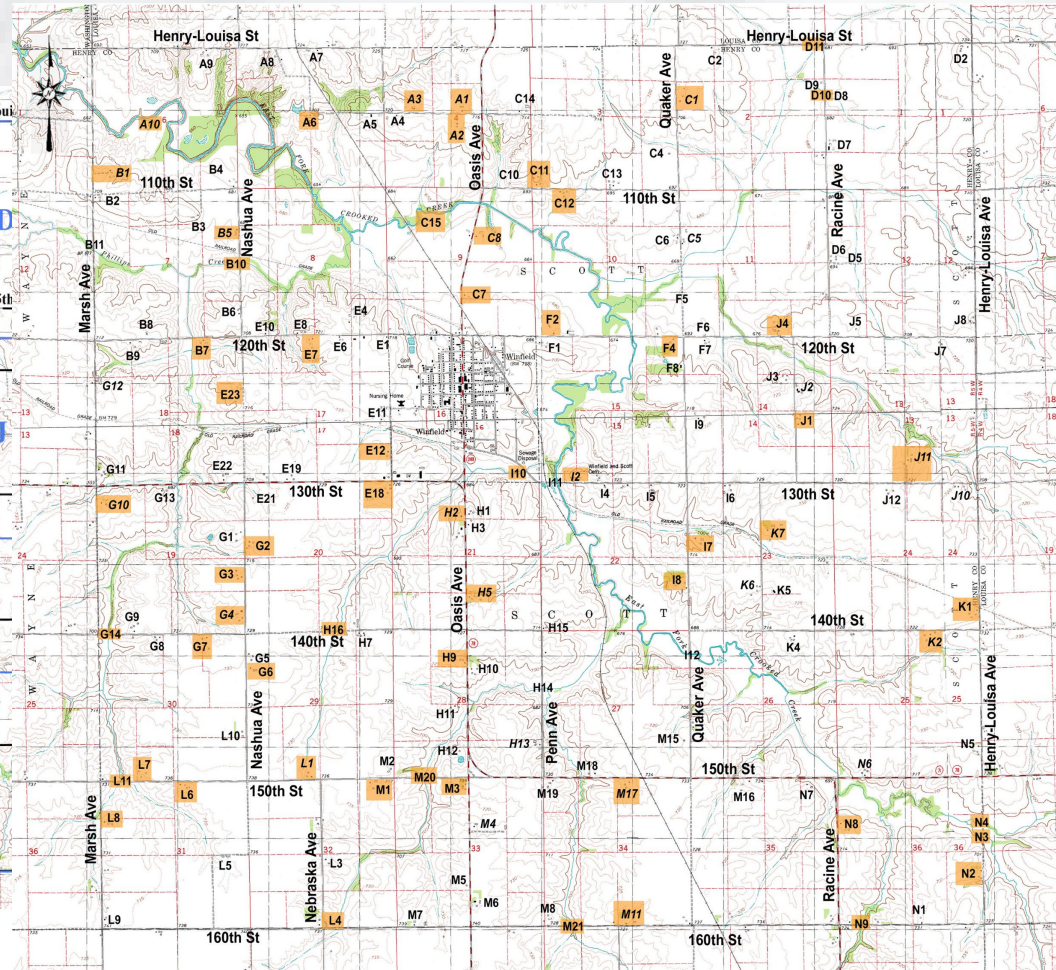
- 2004-05 – Winfield and Scott Township
- 2007-08 – Salem and east half of Salem Township
- 2015-16 – Wayland and Jefferson Township



Reconnaissance Level Surveys



Winfield North 1981
Winfield South 1981
Architectural/Historical Reconnaissance Survey
Scott Township, Henry County



Field Site Numbers - Scott Township Reconnaissance Survey



Reconnaissance Level Surveys

Reconnaissance Level Historical and Architectural Survey of the East Half of Salem Township, Henry County, Iowa



June 6, 2008

Prepared for:

Henry County Historic Preservation Commission

Submitted by:



Rebecca Lawin McCarley
SPARK Consulting
Davenport, IA

Site Inventory Form
State Historical Society of Iowa
(December 1, 1999)

State Inventory No. 44-01654 New Supplemental

Part of a district with known boundaries (enter inventory no.)
Relationship: Contributing Noncontributing

Contributes to a potential district with yet unknown boundaries
National Register Status: (any that apply) Listed De-listed NHL DOE
Review & Compliance No. _____
 Non-Extant (enter year) _____

1. Name of Property
historic name House and buildings
other names/site number Reconnaissance Survey Field Site # C-09

2. Location
street & number 1332 Agency Road
city or town Salem vicinity, county Henry
Legal Description: (If Rural) Township Name _____ Township No. _____ Range No. _____ Section _____ Quarter of Quarter _____
Salem 70 N 7 W 010 SE SW
(If Urban) Subdivision _____ Block(s) _____ Lot(s) _____

3. State/Federal Agency Certification [Skip this Section]
4. National Park Service Certification [Skip this Section]
5. Classification
Category of Property (Check only one box) building(s) district site structure object

Number of Resources within Property		If Eligible Property, enter number of:		
If Non-Eligible Property		Contributing	Noncontributing	
_____	_____	_____	_____	buildings
_____	_____	_____	_____	sites
_____	_____	_____	_____	structures
_____	_____	_____	_____	objects
_____	_____	_____	_____	Total

Name of related project report or multiple property study (Enter "N/A" if the property is not part of a multiple property examination).
Title Reconnaissance Level Historical/Architectural Survey of Salem Township, Henry County Historical Architectural Data Base Number 44-019

6. Function or Use
Historic Functions (Enter categories from instructions) 09B01: Agriculture - Farmstead
Current Functions (Enter categories from instructions) 09B01: Agriculture - Farmstead

7. Description
Architectural Classification (Enter categories from instructions) _____
Materials (Enter categories from instructions)
foundation 04C: Limestone
walls 02: Wood
roof 08: Asphalt
other _____

8. Statement of Significance
Applicable National Register Criteria (Mark "x" representing your opinion of eligibility after applying relevant National Register criteria)
 Yes No More Research Recommended
 Yes No More Research Recommended
 Yes No More Research Recommended
 Yes No More Research Recommended

A Property is associated with significant events.	B Property is associated with the lives of significant persons.
C Property has distinctive architectural characteristics.	D Property yields significant information in archaeology or history.

County Henry Address 1332 Agency Road Site Number 44-01654
City Salem District Number _____

Criteria Considerations
 A Owned by a religious institution or used for religious purposes. E A reconstructed building, object, or structure.
 B Removed from its original location. F A commemorative property.
 C A birthplace or grave. G Less than 50 years of age or achieved significance within the past 50 years.
 D A cemetery

Areas of Significance (Enter categories from instructions) _____
Significant Dates
Construction date 1880s? check if circa or estimated date
Other dates _____

Significant Person (Complete if National Register Criterion B is marked above) _____
Architect/Builder
Architect _____
Builder _____

Narrative Statement of Significance (SEE CONTINUATION SHEETS, WHICH MUST BE COMPLETED)
9. Major Bibliographical References
Bibliography See continuation sheet for citations of the books, articles, and other sources used in preparing this form

10. Geographic Data
UTM References (OPTIONAL)
Zone Easting Northing Zone Easting Northing
1 _____ 2 _____
3 _____ 4 _____
 See continuation sheet for additional UTM references or comments

11. Form Prepared By
name/title Eric De Kraai and Jean Leeper "volunteers" (R.L. McCarley, Consultant)
organization Henry County Historic Preservation Commission date February 4, 2008
street & number 3205 Graham Ave (Kay Wesely, director) telephone (319-258-2891 - Kay Wesely)
city or town Salem state IA zip code 52649

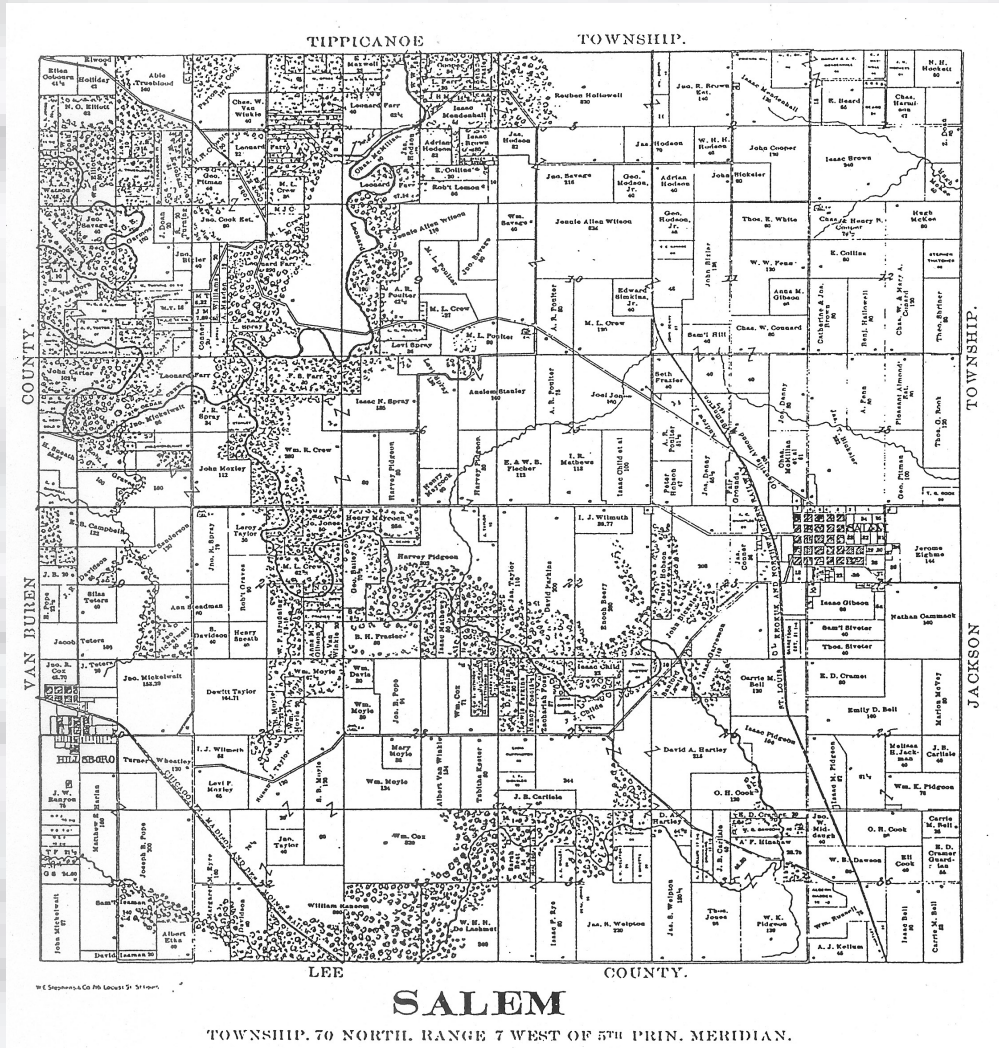
ADDITIONAL DOCUMENTATION (Submit the following items with the completed form)
FOR ALL PROPERTIES
1. Map: showing the property's location in a town/city or township.
2. Site plan: showing position of buildings and structures on the site in relation to public road(s).
3. Photographs: representative black and white photos. If the photos are taken as part of a survey for which the Society is to be curator of the negatives or color slides, a photo/catalog sheet needs to be included with the negatives/slides and the following needs to be provided below on this particular inventory site:
Roll/slide sheet # _____ Frame/slot # _____ Date Taken _____
Roll/slide sheet # _____ Frame/slot # _____ Date Taken _____
Roll/slide sheet # _____ Frame/slot # _____ Date Taken _____
 See continuation sheet or attached photo & slide catalog sheet for list of photo roll or slide entries.
 Photos/illustrations without negatives are also in this site inventory file.

FOR CERTAIN KINDS OF PROPERTIES, INCLUDE THE FOLLOWING AS WELL
1. Farmstead & District: (List of structures and buildings, known or estimated year built, and contributing or non-contributing status)
2. Barn:
a. A sketch of the frame/truss configuration in the form of drawing a typical middle bent of the barn.
b. A photograph of the loft showing the frame configuration along one side.
c. A sketch floor plan of the interior space arrangements along with the barn's exterior dimensions in feet.

State Historic Preservation Office (SHPO) Use Only Below This Line
Concur with above survey opinion on National Register eligibility: Yes No More Research Recommended
 This is a locally designated property or part of a locally designated district.

Comments: _____
Evaluated by (name/title): _____ Date: _____

Reconnaissance Level Surveys



Iowa Department of Cultural Affairs
 State Historical Society of Iowa
Iowa Site Inventory Form
Continuation Sheet

Site Number 44-01654
 Related District Number _____

Page 3

House and buildings _____ Henry
 Name of Property _____ County
 1332 Agency Road _____ Salem
 Address _____ City

Construction dates:
 Assessor date: 1910
 Better estimated date and source: 1880s?

Additional historical/architectural information from the Reconnaissance Survey:

1859 map – W. Elliott – 80 acres – three houses on property
 1870 map – W. Elliott owns and it appears there is a house on both sides of the road, maybe three.
 1895 map – A.R. Poulter – house appears roughly here – second house to east on property also – E half of SW quarter of section 10, both sides of road (80 acres) – he also owned tract to south – E ½ of NW quarter of Section 15 (75 acres)
 1917 map – A.R. Poulter – house is here – same tracts – second house on south tract at bend in road (C-14 – 2978 Clayton - 44-01657 – tenant house – include this house in further evaluation)
 Excellent property – Queen Anne architecture of house – iron fence – outbuildings

history of Poulter family in *Bits & Pieces of Salem History*, 1996 – page 15: Alfred Poulter was the son of Charles James and Susanna Crew Poulter. Alfred Poulter married Sarah Masden and had purchased land west of Salem, close to the Crew farm. The floor plan resembled the home of the Masden sister in the town of Salem but on a larger scale. Alford and Sarah had two daughters, Florence and Versa, neither married, both were among the first to manage a farm with the help of a hired hand. When Versa died her entire estate was left to furthering education for the young people of Henry County.

Abstract research conducted for property:

Grantor/Seller:	John Lewelling	Legal Description and other relevant notes:	E ½ SW 80 acres 10-70-07
Grantee/Buyer:	William Lewelling died 1847		
Date:	1-6-1840		
Price:	\$200.00	Deed book record (if listed) – book/page:	A-68
Grantor/Seller:	John Lewelling and wife	Legal Description and other relevant notes:	E ½ SW ¼ Sec 10 and pt # 1/3 Sw ¼ Sec 9
Grantee/Buyer:	Wyke Elliott		
Date:	11-26-1849		
Price:	\$1,000.00	Deed book record (if listed) – book/page:	I-46
Grantor/Seller:	Wyke Elliott	Legal Description and other relevant notes:	E ½ SW ¼ Sec. 10 and pt E ½ SW Sec. 9 also lot #5 W ½ SE ¼ Section 5 (Crew estate Book W 606-607)
Grantee/Buyer:	Mary Elliott		
Date: Inst:	April 11, 1879		
Price:	\$2,000.00	Deed book record (if listed) – book/page:	33-52
Grantor/Seller:	Wyke Elliott Sr. and wife	Legal Description and other relevant notes:	E ½ SW (Except 3 acres S of Salem and Fairfield Road in SE corner of said land) + N ½ NE SW sec 9
Grantee/Buyer:	Alfred R. Poulter		
Date:	March 10, 1882		
Price:	\$3,323.00	Deed book record (if listed) – book/page:	39-118

Reconnaissance Level Surveys

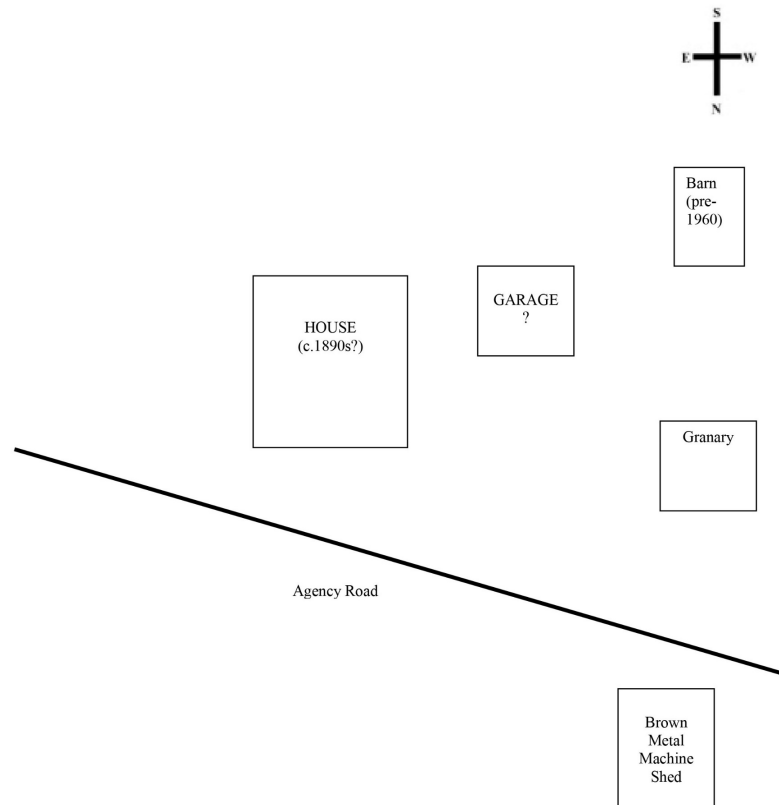
Iowa Department of Cultural Affairs
State Historical Society of Iowa
**Iowa Site Inventory Form
Continuation Sheet**

Site Number 44-01654
Related District Number _____

Page 5

House and buildings Henry
Name of Property County
1332 Agency Road Salem
Address City

Sketch map



Iowa Department of Cultural Affairs
State Historical Society of Iowa
**Iowa Site Inventory Form
Continuation Sheet**

Site Number 44-01654
Related District Number _____

Page 6

House and buildings Henry
Name of Property County
1332 Agency Road Salem
Address City

Location map



Photograph from field survey



Reconnaissance Level Surveys

Reconnaissance Level Historical and Architectural Survey of Jefferson Township, Henry County, Iowa



June 30, 2016

Prepared for:

Henry County Historic Preservation Commission

Submitted by:



Rebecca Lawin McCarley
SPARK Consulting
Davenport, IA

Table of Contents

I. Executive Summary	1
II. Project Design and Objectives	2
III. Historic Contexts and Associated Property Types	11
Farms and Farmsteads in Jefferson Township: 1833-c.1970	11
Associated Property Types: Farms and Farmsteads in Jefferson Township, c.1833-c.1970	68
Community Development in Wayland: c.1838-c.1975	82
Associated Property Types: Community Development in Wayland, c.1838-c.1975	130
Major Bibliographical References.....	151
IV. Identification and Evaluation Methods	155
V. Survey Results	159
Inventory.....	159
Preliminary Evaluation.....	238
VI. Recommendations.....	279
Appendix A. Sample Survey Forms	287

List of Figures

Figure 1. Map of Jefferson Township survey area.	2
Figure 2. Original 1837 survey of Jefferson Township, with associated notes (WCC 1980: 2-3).	12
Figure 3. Location of Jefferson Township noted with star on portion of c.1840 map published by J. Calvin Smith, <i>Guide through Ohio, Michigan, Indiana, Illinois, Missouri, Wisconsin & Iowa</i>	13
Figure 4. Part of the <i>Map of the Surveyed Part of Iowa</i> , with Henry County outlined and Jefferson Township shaded (Williams 1840).	14
Figure 5. Jefferson Township, 1859 (Cooper 1989: 11).....	20
Figure 6. Merrimac Mills in 1870 (Thompson and Everts 1870: 25).	21
Figure 7. Jefferson Township, 1870 (Thompson and Everts 1870: 11).	24
Figure 8. Jefferson Township in 1875 (Andreas 1875: 49).....	25
Figure 9. Buildings in Jefferson Township included in the 1870 atlas (Thompson and Everts 1870: 12).....	26
Figure 10. Railroads across northern Henry County in 1895 (Brooks & Whiting 1895: 1).....	31
Figure 11. Later photograph of the mill at Coppock (WCC 1980: 289).	32
Figure 12. Jefferson Township, Henry County, 1895 (Brooks & Whiting 1895: 4).....	37
Figure 13. Rural churches in Henry County in 1910s, with notes on dates of construction, remodeling, closures, moves, and demolition. Extant historic churches indicated by solid square. (McCarly 2014; base map from Ogle 1917: 31).....	43

Table 6. Sites identified with strong potential for listing on National Register of Historic Places.

Address Map/Survey # State Site #	Historic name Significant date – resource style/type Garage / outbuildings	Identified associated names / history Other notes	NRHP evaluation
200 block W. Main Wayland Map #O- 01-24 State #44-02195	Wayland Downtown Historic District c.1876-1967 - historic district Garage: no Outbuildings: no	Names/history: <i>Notes:</i> -	yes - eligible district (16 C, 6 NC)
300-400 block W. Main Wayland Map #T- 01-18 State #44-02194	West Main Residential Historic District c.1892-1917 - historic district Garage: no Outbuildings: no	Names/history: <i>Notes:</i> -	yes - eligible district (16 C, 2 NC, +garages)
116 W. 2nd St Wayland Map #M-10a State #44-01789	Christian K. and Margaret Schantz House c.1906 - Queen Anne 2 story - frame - asbestos - Brick foundation - Hip roof - asbestos Garage: no Outbuildings: see #44-00907 – carpentry shop	Names/history: Chris K. Schantz (1903- 1906) (carpenter, may have built c.1903 but likely 1906), Chris K. and Margaret Schantz (1906-1950s) (carpenter/contractor), Margaret Schantz (1950s-1962) (widow), Gilbert Schantz (1962-1965), Duwaine and Bonnie Hirschy (1965-1980s)	yes - eligible (C) (with carpentry shop)
111? S. Washington <i>(not 105)</i> Wayland Map #M-10b State #44-00907	C.K. Schantz Carpentry Shop c.1880s? - com - 1 story - false front - frame Garage: no Outbuildings: see #44-01789 – Schantz House	Names/history: owned by Jackson Allen (1876-1881), then M.M. Cook (1882- 1900), then Amos Boshart (1900-03) - built by Allen or Cook as rental; 1903- 1947 - C.K. Schantz Carpentry Shop (owned/lived in house to south also); 1947-1960s - Tschantz Brothers? (contractors)	yes - eligible (C) (with house)
110 W. Front Wayland Map #P-06 State #44-01851	Ray P. and Ellen M. Roth House c.1911 - bungalow - gable front 1 1/2 story - frame - wood shake - concrete block (beveled) foundation - gable-front roof - asbestos Garage: yes (c.1920 - frame - gable- front - 1 car) Outbuildings: no	Names/history: Ray P. and Ellen M. Roth (1911-1919) (carpenter), Menno E. and Sophia Boshart (1919-1924), Omer C. and Eda Boshart (1924-1958) <i>Notes:</i> -	yes - eligible (C)
208 W. Front Wayland Map #P-16 State #44-01860	Jacob P. and Anna F. Schowalter House c.1912 - bungalow - side gable 1 1/2 story - brick / frame - wood shake - Concrete block (rusticated) foundation - Hip roof - asphalt Garage: attached (c.1970 - frame - 2 car) Outbuildings: no	Names/history: Nellie Taylor (1906- 1912), Jacob P. and Anna F. Schowalter (1912-1913), Anna F. Schowalter (1913-1927) (widow), Joseph W. and Katherine Wittrig (1927-1946) (hardware store), Sarah Wenger (1946-1962), Mary Haberman (1962-1975) <i>Notes:</i> -	yes - eligible (C)

Intensive Level Survey of Winfield

- 2007-08 – HRDP grant
- Volunteers in Winfield
- Newspaper research
- Site specific research
- Photographs
- Iowa Site Inventory forms
- Survey report



Figure 24. Overview map of Winfield with parcels included in the survey outlined.

Intensive Level Survey of Winfield

Site Inventory Form
State Historical Society of Iowa
 (December 1, 1999)

State Inventory No. 44-01053 New **Supplemental**
 Part of a district with known boundaries (enter inventory no.) 44-01709
 Relationship: Contributing Noncontributing
 Contributes to a potential district with yet unknown boundaries
 National Register Status: (any that apply) Listed De-listed NHL DOE
 Review & Compliance No. _____
 Non-Extant (enter year) _____

1. Name of Property

historic name Fred E. and Effie Larson House

other names/site number 2008 Intensive Survey #W-054; 2004-05 Reconnaissance Survey Field Site # WE-03

2. Location

street & number 105 N. Clark

city or town Winfield vicinity, county Henry
 Legal Description: (If Rural) Township Name _____ Township No. _____ Range No. _____ Section _____ Quarter of Quarter _____
Scott 73 N 5 W _____
 (If Urban) Subdivision Out lot 24 Block(s) _____ Lot 64' N192' W150' of E210'

3. State/Federal Agency Certification [Skip this Section]
4. National Park Service Certification [Skip this Section]
5. Classification

Category of Property (Check only one box) **Number of Resources within Property**

Category of Property	If Non-Eligible Property		If Eligible Property, enter number of:	
	Enter number of:	Contributing	Noncontributing	
<input checked="" type="checkbox"/> building(s)	_____	<u>2</u>	_____	buildings
<input type="checkbox"/> district	_____	_____	_____	sites
<input type="checkbox"/> site	_____	_____	_____	structures
<input type="checkbox"/> structure	_____	_____	_____	objects
<input type="checkbox"/> object	_____	_____	_____	Total
	_____	<u>2</u>	_____	

Name of related project report or multiple property study (Enter "N/A" if the property is not part of a multiple property examination).
 Title _____ Historical Architectural Data Base Number _____
Intensive Level Historical/Architectural Survey I of Winfield, Henry County 44-020

6. Function or Use

Historic Functions (Enter categories from instructions) **Current Functions** (Enter categories from instructions)

01A01: Domestic - residence 01A01: Domestic - residence

01C05: Domestic - garage 01C05: Domestic - garage

7. Description

Architectural Classification (Enter categories from instructions) **Materials** (Enter categories from instructions)

07E: Early 20th Century American / Bungalow foundation 10A: Concrete Block

_____ walls 02A: Wood - weatherboard

_____ roof 08A: Asphalt shingle

other _____

Narrative Description (SEE CONTINUATION SHEETS, WHICH MUST BE COMPLETED)

8. Statement of Significance

Applicable National Register Criteria (Mark "X" representing your opinion of eligibility after applying relevant National Register criteria)

<input checked="" type="checkbox"/> Yes <input type="checkbox"/> No <input type="checkbox"/> More Research Recommended	A	Property is associated with significant events.
<input type="checkbox"/> Yes <input type="checkbox"/> No <input checked="" type="checkbox"/> More Research Recommended	B	Property is associated with the lives of significant persons.
<input checked="" type="checkbox"/> Yes <input type="checkbox"/> No <input type="checkbox"/> More Research Recommended	C	Property has distinctive architectural characteristics.
<input type="checkbox"/> Yes <input type="checkbox"/> No <input type="checkbox"/> More Research Recommended	D	Property yields significant information in archaeology or history.

Iowa Department of Cultural Affairs
 State Historical Society of Iowa

Site Number 44-01053
 Related District Number _____

Iowa Site Inventory Form
Continuation Sheet

Page 3

Fred E. and Effie Larson House Henry
 Name of Property County

105 N. Clark Winfield
 Address City

7. Narrative Description

This is a one-and-one-half-story hip-roof frame bungalow built in 1910. The house sits on a rusticated concrete block foundation, and the walls are clad in weatherboard siding. The hip roof is clad in shingles, and a square brick chimney is located near the center. The roof extends over the recessed full front porch. The porch has round columns sitting on rusticated concrete block piers, typical of the 1910 construction. The wide frieze of the porch is carried around the house as a wide frieze board under the eave. Interesting, the front door is located around the south corner of the recessed porch on a setback section still facing east. Two one-over-one-light double-hung wood windows are located on the main portion of the façade (east elevation). Hip-roof dormers are found on the east (front) and north and south sides. Each dormer has a set of three windows – a center one-over-one-light double-hung wood window flanked by a single-light (casement?) window on each side. The north side has four one-over-one-light double-hung wood windows on the first story. The south elevation has a small square bay window with three one-over-one-light double-hung wood windows. A smaller window is also located towards the rear on this elevation. The rear (west) elevation include a small "add-on" with a hip-roof on the south portion that may be original or an early addition. A cellar door is located immediately north of this section. The remainder of the rear has a one-over-one-light double-hung wood window.

The garage sits in the northwest corner of the lot, behind the house. The gable-roof has clipped gable ends, characteristic of the 1910s and 1920s. The assessor has a construction date of 1920. It retains original wood siding, as well as eight-light wood windows. It sits on a concrete foundation. The garage doors face east and west, along the eave side. A pedestrian door is found on the south side. The garage was likely built by Clarence Schwartz after he purchased the house in 1923, but may have been built earlier by Larson.

8. Narrative Statement of Significance

The Fred E. and Effie Larson House appears to be individually eligible for the National Register of Historic Places under Criterion C. The house is an excellent example of an early 20th century frame bungalow. Additionally, it was known as the first of this style in Winfield. The integrity of the house is strong, retaining original siding, windows, porch, and overall form. The house may have additional individual significance for its association with Fred E. Larson, a prominent merchant in Winfield. He became associated with the dry goods store of Larson & Peterson in 1903 at age 23, and he moved from Winfield in 1923 at age 43. He lived in this house from its construction in 1910 to 1923. Additionally, the house would contribute historically and architecturally to a potential historic district on the west side of Winfield.

Samuel A. Clark acquired 41.5 acres for \$3,093 on the west side of Winfield from Nathan Mullin & wife on December 3, 1875, living on and holding onto this land for several years after the arrival of the railroad in town in 1876 (Record Book 27; Page 107). By the 1890s, this area of town began to see development, and he began to divide and sell his land holdings. On January 29, 1906, Samuel Clark

Iowa Department of Cultural Affairs
 State Historical Society of Iowa

Site Number 44-01053
 Related District Number _____

Iowa Site Inventory Form
Continuation Sheet

Page 4

Fred E. and Effie Larson House Henry
 Name of Property County

105 N. Clark Winfield
 Address City

sold a tract of land including most of Out Lot 24 for \$10,000, including a house, to C.W. Huntsberry. It appears this included the land on the west side of the 100 block of N. Clark, north of Elm. Huntsberry then began to divide and sell these lots.

On February 18, 1910, C. W. Huntsberry & wife sold this property (S 64 N 192 W 150 E 210 of Out Lot 24) to Fred E. Larson (Tsf Book C; page 368). The 1910 census lists Fred Larson, head of household, age 30; with wife Effie, age 25; Son Arrren, age 3; and Daughter Waneta, age 1 year 9 months. His occupation was as salesman of dry goods. The *Winfield Beacon* on March 31, 1910 notes that Fred Larson was moving out of the Presbyterian parsonage (110 N. Olive) into the dwelling next to E. L. Bemis to let the new minister move in. Fred was building a new residence, but it wouldn't be ready for occupancy for sometime yet. On April 28, 1910, the newspaper reported Fred Larson's new home assuming shape. It is a bungalow design and the first of its kind in the town. Progress was again noted on May 5. The 1920 census lists Fred Larson, head of household, age 40; wife Effie, age 35; son Warren, age 13; daughter Wahnetta, age 11. His occupation was clerk in store. In 1912, his partner, Gus E. Peterson, built a Foursquare home a block north at 207 N. Clark.

In 1904, Larson & Peterson was one of three dry goods stores in Winfield. In October 1903, Stephenson Bros, who at that time owned the stock in the large frame building on the southeast corner of the square known as the J. C. Green building, sold it to Larson & Peterson Co., and they commenced business immediately. The firm originally consisted of F.E. Larson, G.E. Larson, and G.E. Peterson, but G.E. sold his interest to his brother in spring 1906. Their new building was completed in 1907. Ed then sold his interest back to G.E. in 1909 (*Winfield Beacon* booster edition, Dec. 19, 1912, page 15). The 1911-1912 city directory lists F. E. Larson and wife Effie L. His occupation was working for Larson & Peterson. The directory lists F. E. Larson and G. E. Peterson as the partners in Larson & Peterson Co., general merchandise. Unfortunately, the *Beacon* reported on July 31, 1913 that Larson and Peterson was sadly going out of business. Both gentlemen were good boosters for the community. However, advertisements for Larson & Peterson Co. continued to appear through at least 1915. On August 12, 1915, fire in rear of the A. W. Shearer Clothing Store damaged Larson & Peterson. Beginning in 1916, the Peterson Mercantile Company started advertising, carrying poultry supplies, dresses, and general merchandise. On July 3, 1919, the *Beacon* notes that a new gravel roof is being placed on the big store building formerly occupied by the Peterson Mercantile Co. owned by Fred Larson and B.B. Lindly. The men who are to put in a new store are beginning to fit the rooms for occupancy by September 1.

On May 10, 1923, the *Winfield Beacon* noted that Clarence Schwartz from Mt. Pleasant would purchase the Fred Larson home on Millionaire Row, and that Fred Larson will move to Fairfield. Transfer books note that Fred E. Larson & wife sold the property to Clarence H. & Gertrude Schwartz on May 28, 1923 for \$5,750 (Tsf Book D page 103). The 1930 census lists Clarence Swartz, head of household, age 42, carpenter; wife Gertrude B. age 43, high school teacher; Ida M. Shafer, age 25, Lodger, grade school teacher; and Charlotte A. Swain, age 25, lodger, high school teacher. On December 15, 1943, the property transferred from Clarence Schwartz, deceased, to Gertrude Whitmore Schwartz. She continued to own the property until 1975.

Intensive Level Survey of Winfield

Iowa Department of Cultural Affairs
State Historical Society of Iowa

Site Number 44-01053
Related District Number _____

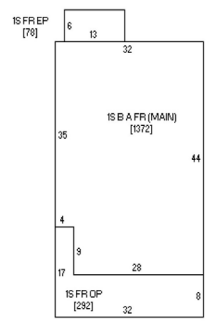
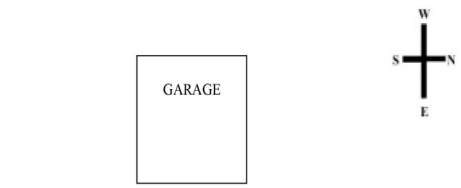
**Iowa Site Inventory Form
Continuation Sheet**

Page 6

Fred E. and Effie Larson House Henry
Name of Property County

105 N. Clark Winfield
Address City

Plan



Clark Street

Iowa Department of Cultural Affairs
State Historical Society of Iowa

Site Number 44-01053
Related District Number _____

**Iowa Site Inventory Form
Continuation Sheet**

Page 7

Fred E. and Effie Larson House Henry
Name of Property County

105 N. Clark Winfield
Address City

Location map



Iowa Department of Cultural Affairs
State Historical Society of Iowa

Site Number 44-01053
Related District Number _____

**Iowa Site Inventory Form
Continuation Sheet**

Page 8

Fred E. and Effie Larson House Henry
Name of Property County

105 N. Clark Winfield
Address City

Photograph from assessor website



Intensive Level Survey of Winfield

Table of Contents

I. EXECUTIVE SUMMARY.....	1
II. PROJECT DESIGN AND OBJECTIVES	2
Previous work in Henry County and Scott Township.....	2
Survey objectives and structure	4
Methodology.....	5
Overview of survey results and products.....	6
III. HISTORIC CONTEXT AND ASSOCIATED PROPERTY TYPES	7
COMMUNITY DEVELOPMENT IN WINFIELD, C.1852-C.1967	7
Initial settlement and development in and around Winfield, 1852-1870.....	8
Arrival of the railroad in Winfield and resulting development, 1870-1890.....	15
Maturation of Winfield through development from 1890-1930.....	18
Maturation of Winfield reflected in businesses and services from 1890-1930.....	27
Steady progress for Winfield, 1930-c.1967.....	45
ASSOCIATED PROPERTY TYPES: COMMUNITY DEVELOPMENT IN WINFIELD, C.1852-C.1967	56
Residential buildings and outbuildings	56
Residential neighborhoods	61
Commercial/Industrial buildings	66
Social and public resources	68
Other historic resources.....	70
MAJOR BIBLIOGRAPHICAL REFERENCES	72
IV. IDENTIFICATION AND EVALUATION METHODS.....	75
V. SURVEY RESULTS	78
VI. RECOMMENDATIONS	102
APPENDIX A. SAMPLE SURVEY FORMS	106

List of Figures

Figure 1. Parcels included in the Intensive Level Survey I of Selected Sites in Winfield.....	3
Figure 2. Scott Township, 1859 (Cooper 1989: 15).....	10
Figure 3. Scott Township, 1870 (Thompson and Everts 1870: 7).....	12
Figure 4. Winfield in 1870 (Thompson and Everts 1870: 34).....	13

Table 1. Sites included in the Intensive Survey I in Winfield.

Address State Site # Map / Field Site #	Name	Date	Style	NRHP evaluation
209 W. Ash State Site #44-01000 Map / Field Site # W-051	Jacob T. and Priscilla Serviss House	c.1889	Gable-front	Individual: maybe - A, B, or C District: west - C - A (2 C)
101 N. Clark State Site #44-01051 Map / Field Site # W-052	J. Edward Huston House	c.1906	Victorian vernacular	Individual: yes - B District: west - C - A & C (1 C, 1 NC)
103 N. Clark State Site #44-01052 Map / Field Site # W-053	Dr. Warren J. and Marjorie Duncan House	c.1909	Queen Anne	Individual: maybe - C District: west - C - A & C (1 C, 1 NC)
105 N. Clark State Site #44-01053 Map / Field Site # W-054	Fred E. and Effie Larson House	1910	Bungalow - hip roof (first in town)	Individual: yes - C District: west - C - A & C (2 C)
106 N. Clark State Site #44-01054 Map / Field Site # W-049	Emma Gladd House	c.1903	Gable-front	Individual: no District: west - C - A (2 C)
107 N. Clark State Site #44-01055 Map / Field Site # W-055	Reece-Barton House	c.1912 (by 1916)	Bungalow - side gable	Individual: maybe - B District: west - C - A (2 C)
108 N. Clark State Site #44-01056 Map / Field Site # W-050	Walter and Bernice Green Carper House	c.1960	ranch	Individual: no District: west - NC (1 NC)
109 N. Clark State Site #44-01057 Map / Field Site # W-056	Matilda C. Lindell House	c.1915	Bungalow - hip roof	Individual: no District: west - C - A & C (2 C, 1 NC)

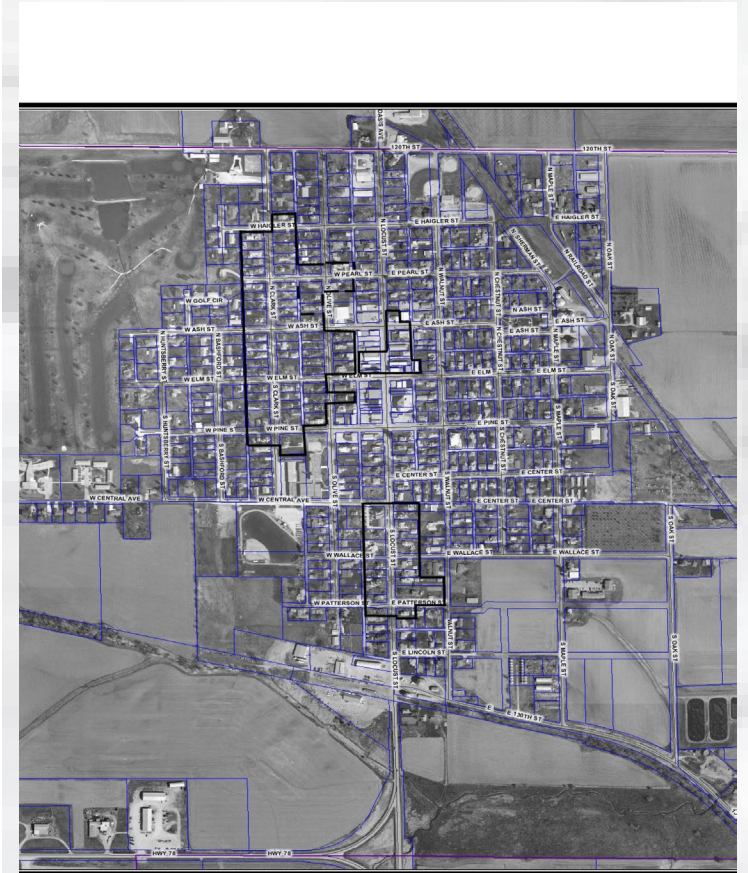


Figure 27. Map of districts that appear eligible for the National Register of Historic Places.

Nomination projects in Salem Twp

- 2009-2010 – HRDP grant
- Recommendations from reconnaissance survey
- 8 nominations - 4 & 4
- Volunteer time – some research, measurements
- Consultant – nominations – two phases of project

STATE HISTORICAL SOCIETY OF IOWA
FY10 REAP/HRDP Grants

PART 2: Project Description and Specific Project Scope of Work

Note: If you are applying for a project to rehabilitate a building or structure in the Historic Preservation Category please fill out Historic Preservation Application A rather than this application. If you are applying in the Historic Preservation Category for a project other than building rehabilitation, please use this form and attach verification of CLG (Certified Local Government) status, if the applicant is a city or county government.

Project Description: Within your discussion, be sure to (1) specifically identify the historical resource and state its significance; (2) provide an overview of the activities you will complete; and (3) explain how the proposed actions will assist the historical resource. Describe how the project will have an impact on the local community (neighborhood, town, region, or however you choose to define that community).

In 2007-2008, the Henry County Historic Preservation Commission conducted a reconnaissance level survey of the east half of Salem Township. The eight properties included in this nomination project were identified during the reconnaissance level survey as potentially eligible for the National Register of Historic Places. Additional information on each property is found on Table 1 on the following page, and the eight properties include:

Payton Wilson Farmstead - 1360 280th Street – Section 3 – Survey # B-07 – State Site #44-01642 – c.1840
Farmstead - 1584 335th Street – Section 36 – Survey #S-01 – State Site #44-01689 – c.1840s or 1850s
Walter Crew Farmstead - 1353 Agency Road – Section 10 – Survey #C-08 – State Site #44-01653 – 1850
Jonathan Cook Farmstead - 3091 Franklin Avenue – Section 14 – Survey #D-03 – State #44-01660 – c.1840s
Bicksler Building - 101-103 W. Cherry Street – Salem – Survey # I-04 – State Site #44-01545 – 1886
Farmers Savings Bank - 101 S. Main Street – Salem – Survey #I-06 – State Site #44-01546 – 1917
I.C. & Agnes Reeves House - 209 S. Main Street – Salem – Survey #J-03 – State Site #44-01557 – 1883
Collins-Bond House - 402 S. Main Street – Salem – Survey # J-10 – State Site #44-01561 – c.1850

Five of these properties were constructed in the pre-Civil War period in Salem Township, a period characterized by the early settlement of Henry County and a strong Society of Friends (Quaker) settlement and presence. Salem Township is located in the southwest corner of Henry County along the border with Lee County. Salem is located in the east half of the township. Salem Township was one of the first settled in the county, and Salem was first platted in 1835. The county was formalized in 1836, and settlement focused on the southern half of the county in the first decades. By 1840, the population of the state reached 43,112, the population of Henry County reached 3,772, and the population of Salem was near 300 – one of the larger towns in Iowa in the period. The history of Salem, located in southwest Henry County, is tied directly to the first Society of Friends (Quaker) settlement west of the Mississippi River. The first Friend arrived in 1835, and the town of Salem was organized in 1837. The Salem Monthly Meeting, the local religious body, was organized under the structure of the Indiana Yearly Meeting, the regional body. Salem served as the starting

Using this same format, continue on additional sheets as necessary.

Nomination projects in Salem Twp

- Paton and Hannah Wilson House
- c.1839-1868
- Criterion A – settlement
- Criterion B – Paton Wilson
- Criterion C - architecture



Nomination projects in Salem Twp

- Lamm-Pollmiller Farmstead District
- c.1849-1939
- 6 C / 6 NC
- Criterion A – settlement / ag
- Criterion C – architecture



Nomination projects in Salem Twp

- Cook-Johnson House
- c.1850-1876
- Criterion A – settlement / Society of Friends (Quakers)



Nomination projects in Salem

- Collins-Bond House
- c.1843-1868
- Criterion A – settlement / anti-slavery activities
- Criterion C - architecture



Nomination projects in Salem

- Isaac and Agnes Reeves House
- 1883-1892
- Criterion B – Isaac Reeves
- Criterion C - architecture



Nomination projects in Salem

- Bicksler Block
- 1886-1960 (1967)
- Criterion A – commercial, public and social history
- Criterion B – John Bicksler
- Criterion C - architecture



Nomination projects in Salem

- Farmers Savings Bank
- 1917-1960 (1992)
- Criterion A – commercial history
- Criterion C - architecture



Nomination projects in Salem Twp

- Micajah L. Crew
Farmstead District
- 1890-1939
- Criterion B –
Micajah L. Crew –
Mary J. Crew
- 1939 – sale to fund
Crew Public Library



Nomination projects in Salem Twp

- Crew Farmstead
- Integrity matters!



Jefferson Twp survey forms

- Recommendations from reconnaissance survey
- Funded at local level in 2017-18
- Consultant based project
- 3 rural properties (3)
- 5 Wayland properties (5)
- 2 historic districts (1)



Jefferson Twp survey forms

Iowa Site Inventory Form
State Historic Preservation Office
 (July 2014)

State Inventory Number: 44-02060 New Supplemental
 9-Digit SHPO Review & Compliance (R&C) Number: _____
 Non-extant Year: _____

Read the Iowa Site Inventory Form Instructions carefully, to ensure accuracy and completeness before completing this form. The instructions are available on our website: <http://www.iowahistory.org/historic-preservation/statewide-inventory-and-collections/iowa-site-inventory-form.html>

• **Property Name**

A) Historic name: Flowers School
 B) Other names: 2015-16 Reconnaissance Survey Field Site # D-10

• **Location**

A) Street address: 1279 126th St
 B) City or town: Wayland Vicinity County: Henry
 C) Legal description:
 Rural: Township Name: Jefferson Township No.: 73N Range No.: 7W Section: 016 Quarter: SW of Quarter: NE
 Urban: Subdivision: _____ Block(s): _____ Lot(s): _____

• **Classification**

A) Property category: *Check only one*
 Building(s)
 District
 Site
 Structure
 Object

B) Number of resources (within property):

If eligible property, enter number of:		If non-eligible property, enter number of:	
Contributing	Noncontributing		
<u>1</u>	Buildings	—	Buildings
—	Sites	—	Sites
—	Structures	—	Structures
—	Objects	—	Objects
<u>1</u>	Total	—	Total

C) For properties listed in the National Register:
 National Register status: Listed De-listed NHL NPS DOE

D) For properties within a historic district:
 Property contributes to a National Register or local certified historic district.
 Property contributes to a potential historic district, based on professional historic/architectural survey and evaluation.
 Property does not contribute to the historic district in which it is located.

Historic district name: _____ Historic district site inventory number: _____

E) Name of related project report or multiple property study, if applicable:
 MPD title: _____ Historical Architectural Data Base #: _____
 Reconnaissance Level Historical/Architectural Survey of Jefferson Township, Henry County 44-024

• **Function or Use** *Enter categories (codes and terms) from the Iowa Site Inventory Form Instructions*

A) Historic functions	B) Current functions
<u>05A01: Education / School House</u>	<u>70: Vacant</u>
_____	_____
_____	_____

• **Description** *Enter categories (codes and terms) from the Iowa Site Inventory Form Instructions*

A) Architectural classification	B) Materials
<u>09H01: One-room Schoolhouse, hip roof</u>	Foundation (visible exterior): <u>10A: concrete block</u>
_____	Walls (visible exterior): <u>02A: weatherboards</u>
_____	Roof: <u>09: asbestos</u>
_____	Other: _____

C) Narrative description SEE CONTINUATION SHEETS, WHICH MUST BE COMPLETED

Iowa Site Inventory Form
State Historic Preservation Office
Continuation Sheet

Site Number: 44-02060
 Related District Number: _____

Page 3

Flowers School Henry
 Name of Property County
1279 126th St Wayland
 Address City

This site inventory form has been prepared in January 2019 for the Henry County Historic Preservation Commission to further evaluate selected resources evaluated as likely eligible for listing on the National Register of Historic Places (NRHP) through the 2015-16 Reconnaissance Survey of Jefferson Township, Henry County. Basic reconnaissance level survey forms were prepared in 2016 as part of that project, and additional historic context on Wayland and Jefferson Township is found within this report. The focus of the development of this site inventory form is to fully document the property and complete all areas included on the form for further evaluation, utilizing information collected as part of the 2015-16 project, information collected during a site visit, and limited additional research. Research has not yet been fully completed for this property, with some additional research envisioned to be completed at a future date. The goal of this current project and preparation of this site inventory form is to provide sufficient information for SHPO to comment on the eligibility of the property, with further research conducted as needed as part of a future NRHP nomination project.

7. Narrative Description

Flowers School is a one-room school house with a hip roof that sits in a rural setting about one mile south of Wayland on 126th Street. The frame building was constructed in 1909 about two miles to the east on the south edge of the middle of section 14 along 130th Street, replacing an earlier school at this location on land owned previously by William Flowers until his death in 1876. When the school closed in 1960 with the consolidation of the rural district with Wayland Community Schools, the Kaufmann family purchased Flowers School and moved it to their land in the middle of section 16. The school was originally oriented to the road to the south, and it is currently oriented to the road to the east. The overall setting is similar to the original site, with the school surrounded by rural/agricultural land and farms. The move preserved the school, and it remains as the only rural school in Jefferson Township with its original form/design intact.

The frame school is clad in weatherboard siding with corner boards with a small capital detail. While the weatherboard is in fair condition overall, a section of deteriorated/loose weatherboards is found on the southeast corner and along the base of the south side. The west elevation has sections of loose/missing weatherboards, and this elevation has not been painted as recently as the other sides. The frieze is wide with a bead molding at the top. The façade has a gable clad in wood shingles on the roof at the base of the bell tower, which is also clad in wood shingles. While the base for the bell tower remains, the upper portion has been removed. The hip roof is clad in asbestos shingles, which may be the original roofing for the school. A chimney was located to the right of the bell tower on the front portion of the roof, and it was likely removed with the move in 1960. A patch is visible on the roof. The school sits on concrete block foundation, consisting of rows of concrete blocks supporting the front and rear walls and the beams under the school likely utilized for the move. The entry is accessed by a set of wood stairs that was constructed on this site for the school. While a historic photo of the school shows a double-door entry with transom window, the 1956 photograph appears to show the current single-door entry configuration, suggesting this modification dates prior to the move. The current weather board siding shows no evidence of a modified entry, further suggesting some or all of the façade siding was replaced when this entry was reconfigured. The current door is a more modern replacement. The façade has a two-over-two-light double-hung wood window with transom window on either side of the main entry (current east elevation, originally south elevation). The south side elevation (originally west side) has three two-over-two-light double-hung wood windows with transom

Iowa Site Inventory Form
State Historic Preservation Office
Continuation Sheet

Site Number: 44-02060
 Related District Number: _____

Page 5

Flowers School Henry
 Name of Property County
1279 126th St Wayland
 Address City

8. Narrative Statement of Significance

Flowers School appears to be eligible for the National Register of Historic Places under Criterion A for its historical significance in the educational history of Henry County and under Criterion C for its architecture. Flowers School was built in 1909 as a rural school in section 14, serving the students in the east-central portion of Jefferson Township. It replaced an earlier school at this location to continue to provide a local school option for these rural residents. The school was cited for its progressive playground / recreational program in 1916. While enrollment dwindled in the 1930s, there was a resurgence in enrollment numbers by the end of the 1940s. This one-room school continued to serve the educational needs of eastern Jefferson Township through the end of the 1950s. While the number of rural schools declined throughout the county in the 1950s, a large number of remaining schools closed in 1959 with the creation of the Mt. Pleasant Community School District, leaving Flowers School as one of three remaining operating rural schools for the 1959-60 year. The formation of the Wayland Community School District encompassed the Flowers School No. 4 district, and Flowers School was then closed and sold at auction in August 1960. The sale resulted in the move about two miles to the west to preserve this rural school in its original form. The property meets Criterion Consideration B (moved properties) as the new setting is similar to the original setting, and the understanding of the building as a rural school has not been lost with the move. Additionally, the move reflects the trends in education in the late 1950s to close rural schools for school reorganization efforts and the resulting impact on these resources. Flowers School was utilized as a family / community center on this new site for several decades, though it has now not been utilized for many years. The architectural design of this 1909 frame school is unique, incorporating a hip roof form, bell tower, and overall cubical form. The school retains many historic design features, including the overall form, window trim, front gable, bell tower base, interior layout, and interior wood trim. The interior layout incorporated coat rooms near the entry as was typical in many rural schools by the end of the 19th century, but the overall cubical form resulted in a rectangular classroom then oriented to the side of the building rather than towards the rear. The window configuration of the school thus reflects the blackboards along one side wall and open space along the opposite side and rear of the school. Flowers School is the only remaining rural school in Jefferson Township that reflects its historic integrity as a rural school, and one of few rural schools remaining in its original form in Henry County.

Developmental history

Henry County was at the forefront of education in Iowa, with early settlements quickly forming schools and academies to meet the educational needs of residents. Jefferson Township in the northwest corner of Henry County was among the northern townships that developed slowly through the middle of the 19th century, with no railroad connection until 1882. In the 1859-60 county directory, Marshall (later Wayland) is noted as the only village in Jefferson Township, with around 250 residents. The town included one good church, a school house, and three stores. A considerable amount of business was conducted in town for the surrounding area (Bowron 1859: 88). The 1859 map of the township shows the town of Marshall, as well as the rural schools and churches in Jefferson Township (Figure 1). The original Flowers School is indicated in the southwest corner of Section 14 on the land of William Flowers, one of four rural schools indicated in Jefferson Township on the map. Local history notes that the original school was log construction (WCC 1980: 269). The land was sold by James Bateman to

Jefferson Twp survey forms

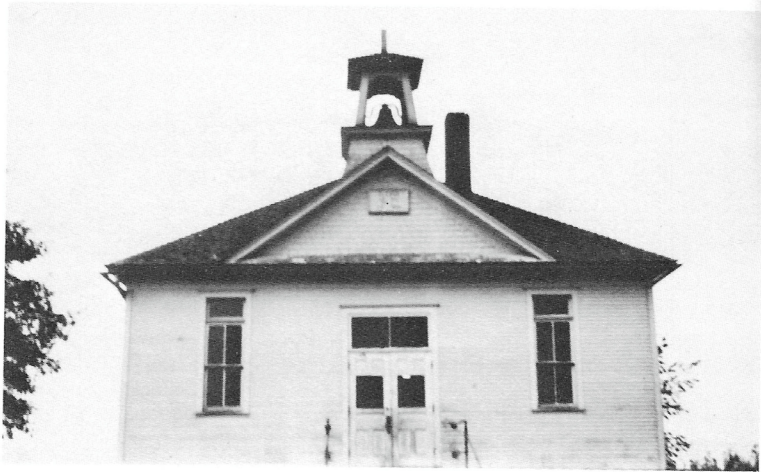
Iowa Site Inventory Form
 State Historic Preservation Office
 Continuation Sheet

Site Number: 44-02060
 Related District Number: _____

Page 11

Flowers School Henry
 Name of Property County
1279 126th St Wayland
 Address City

the building. Thus, four windows span the rear of the building and three windows span the left side of the building, with two high windows above the blackboards on the right side. Additionally, the school is clad in asbestos shingles, a roofing material that was introduced to this area by the time of its construction in 1909.



Flowers School

Figure 5. Historic photograph of Flowers School, unknown date (WCC 1980, page 270)

Flowers School was likely built by C.K. Schantz, though that information has not been confirmed. C.K. Schantz started working as a carpenter in 1893, constructing buildings in and around Wayland. He then officially established his own contracting firm in 1900. A later profile notes that he constructed the first self-supporting barn roof on his family farm north of Wayland in 1901. A later profile of C.K. Schantz notes that he introduced asbestos shingles for roofs to this area in 1904, and these roofs became a specialty for him. Asbestos shingles were manufactured with cement and asbestos fiber, and they were noted as a durable alternative to more expensive slate ("C.K. Schantz, local contractor, retires, nephews take over," *Wayland News*, January 30, 1947, 1; WCC 1980: 26, 154). By November 1907, the newspaper noted that C.K. Schantz had built 11 new residences, remodeled five residences,

Iowa Site Inventory Form
 State Historic Preservation Office
 Continuation Sheet

Site Number: 44-02060
 Related District Number: _____

Page 13

Flowers School Henry
 Name of Property County
1279 126th St Wayland
 Address City



Figure 6. Jefferson Township in 1917, with Flowers School indicated (Ogle 1917: 32).

Fairview School No. 6 – Sec 2, Clay (or Cottonwood) School No. 2 – Sec 5, Flowers School No. 4 – Sec 14, Douglas School No. 7 – Sec 20, Maple Grove School No. 1 – Sec 26, Elm School No. 3 – Sec 32

Iowa Site Inventory Form
 State Historic Preservation Office
 Continuation Sheet

Site Number: 44-02060
 Related District Number: _____

Page 18

Flowers School Henry
 Name of Property County
1279 126th St Wayland
 Address City

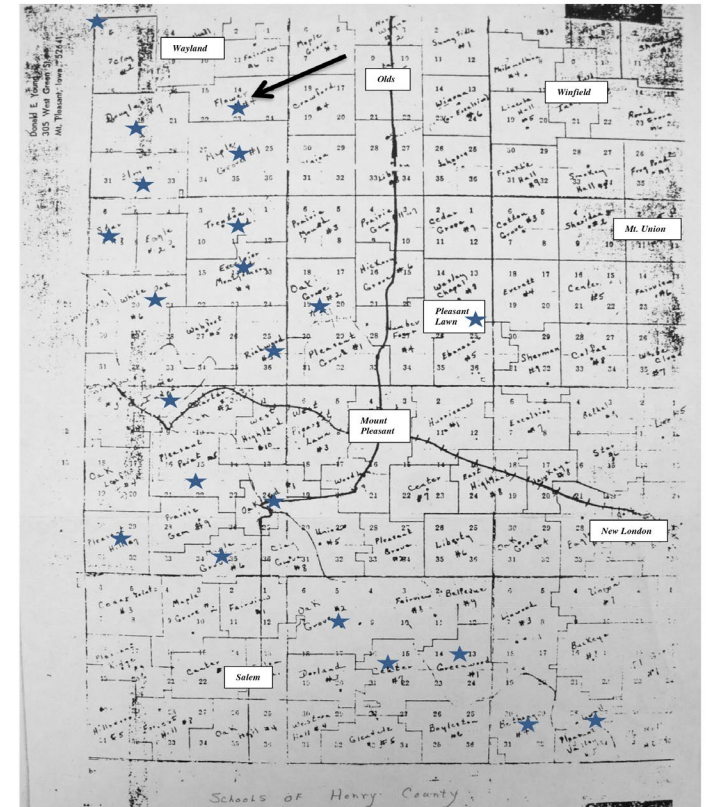


Figure 8. Rural schools (22) that held classes in Henry County in 1955-56 (indicated with star), with Flowers School indicated (and with consolidated districts labeled) (McCarley 2019; overlaid on schools map by Donald Young)

Jefferson Twp survey forms

Iowa Site Inventory Form
 State Historic Preservation Office
 Continuation Sheet

Site Number: 44-02060
 Related District Number: _____

Page 27

Flowers School	Henry
Name of Property	County
1279 126 th St	Wayland
Address	City

Pictometry view from Henry County GIS – 2013 imagery



© 2013 Pictometry (04/13/2013)

Iowa Site Inventory Form
 State Historic Preservation Office
 Continuation Sheet

Site Number: 44-02060
 Related District Number: _____

Page 28

Flowers School	Henry
Name of Property	County
1279 126 th St	Wayland
Address	City

Digital photographs



Photograph 1. Flowers School, looking southwest (October 2015)

Iowa Site Inventory Form
 State Historic Preservation Office
 Continuation Sheet

Site Number: 44-02060
 Related District Number: _____

Page 37

Flowers School	Henry
Name of Property	County
1279 126 th St	Wayland
Address	City



Photograph 16. Interior of school, looking northwest (December 13, 2018)



Photograph 17. Interior of school, looking southwest (December 13, 2018)

Jefferson Twp / Wayland nominations

- Samuel and Sarah Hulme House
- 1862-1913
- Criterion A – agricultural history
- Criterion C - architecture
- Listed in 2019



Jefferson Twp / Wayland nominations

- C.K. and Margaret Schantz House and Carpentry Shop
- 1903-1947
- Criterion A – business
- Criterion B – C.K. Schantz
- Criterion C – architecture
– carpentry shop
- Listed in 2021



Jefferson Twp / Wayland nominations

- West Main Street Residential Historic District
- 1888-1926
- 22 C, 10 NC
- Criterion A
- Criterion C
- Listed in 2023



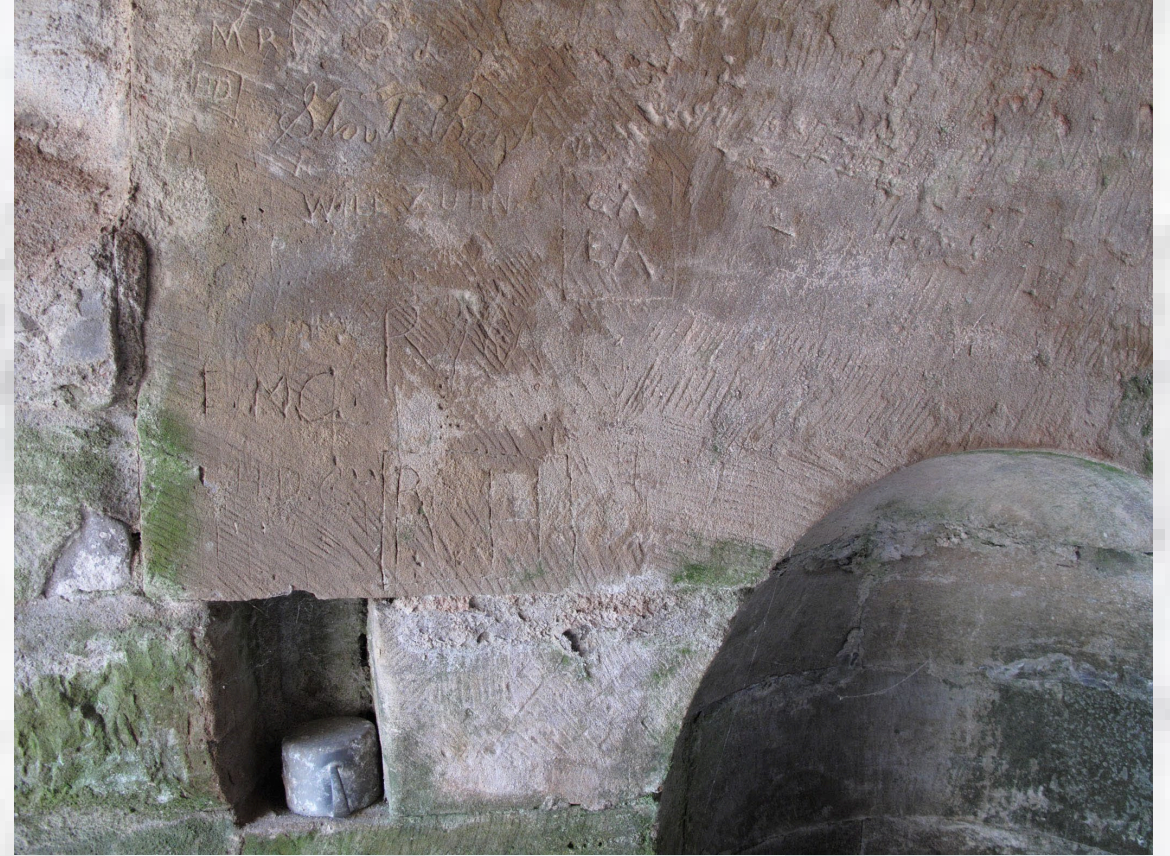
Camp Harlan / Camp McKean HD



c.1854 springhouse – farm of Hugh B. and Mary Swan

2011

Camp Harlan / Camp McKean HD



“Excellent water was supplied from Swan's Spring, a famous spring near the Swan farm-house, just beyond the northwest corner of the camp-ground.” (Scott 1893: 5) 15+ *identified names/initials*

Camp Harlan / Camp McKean HD



c.1854 house, 1880s barn, 1930 marker, 1930s garage / outbuildings

Camp Harlan / Camp McKean HD



Camp Harlan – Sept 1861 to Feb 1862 – Fourth Iowa Cavalry

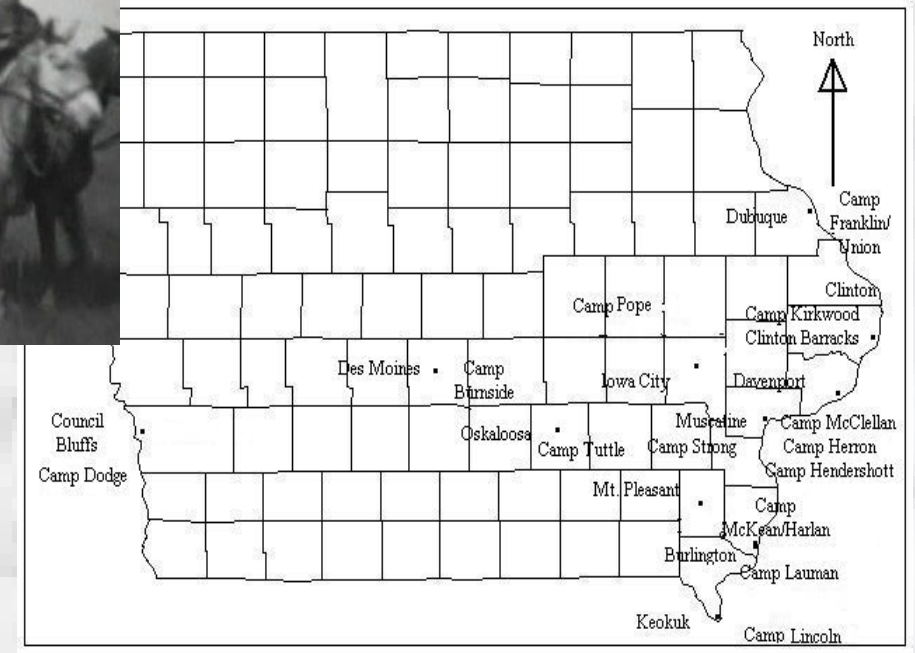
Camp McKean – Aug 1862 to Nov 1862 – 25th Iowa Infantry

Camp Harlan / Camp McKean HD



Clip from 1930 dedication of Civil War Memorial Marker

27 camps total:
1 of 5 inland towns with camp sites,
Long time frame,
1 of 4 across phases
(Jacobsen 2011: 94)



Civil War Rendezvous Camps - Phase IV camps (latter 1862) (Jacobsen 2011: 99)

Civil War Rendezvous Camps - Phase II camps (latter 1861) (Jacobsen 2011: 98)

Camp Harlan / Camp McKean HD

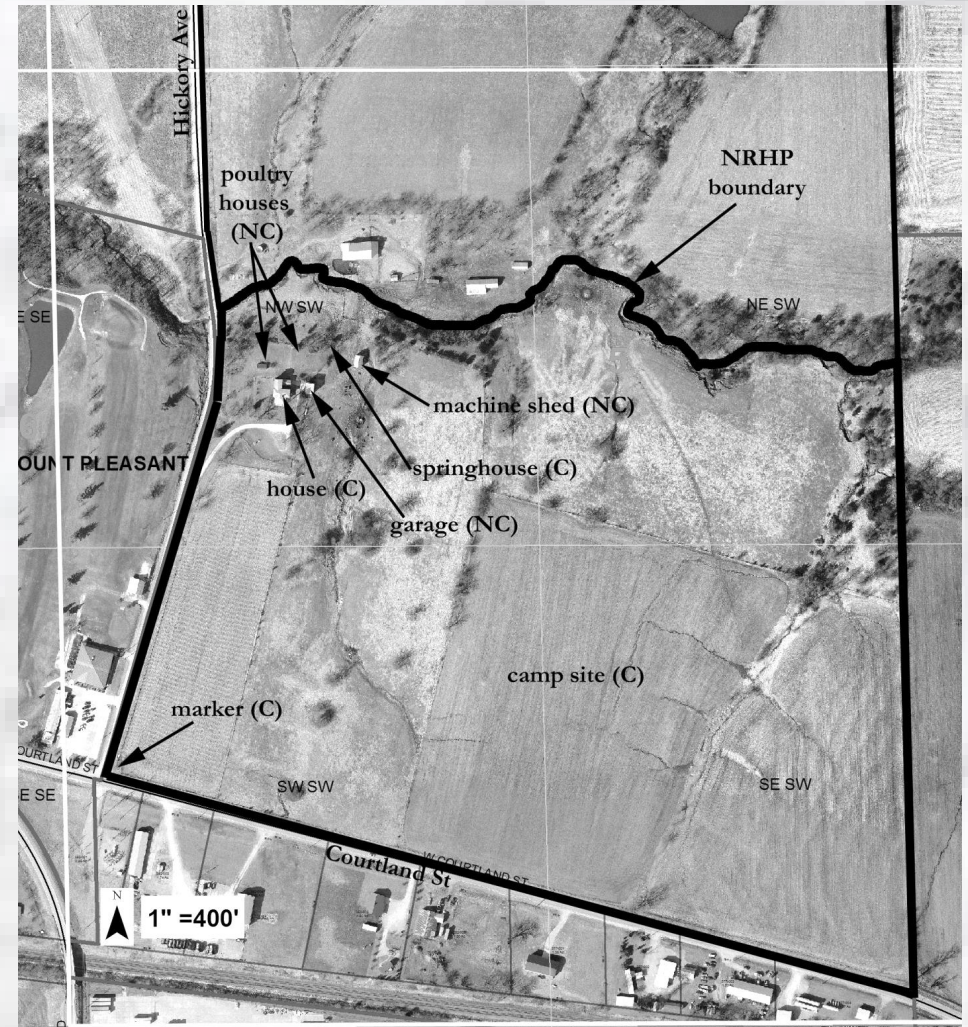


Clip from 1930 dedication by DUV
of Civil War Memorial Marker



Camp Harlan / Camp McKean HD

- Period of significance - c.1854, 1861-62, 1930
- Criterion A – statewide
- Criterion C – local – springhouse
- 2 C buildings, 1 C site, 1 C object, 4 NC buildings
- Listed in 2012



Survey of selected rural sites

- 2012-2013 - 6 rural sites selected
- Benjamin Chapel
- Pickle Church
- Pilot Grove Depot
- Edwards House
- Boyle House
- Garretson House

Site Inventory Form State Inventory No. 44-01769 New Supplemental
 State Historical Society of Iowa Part of a district with known boundaries (enter inventory no.) _____
 (November 2005) Relationship: Contributing Noncontributing
 Contributes to a potential district with yet unknown boundaries
 National Register Status:(any that apply) Listed De-listed NHL DOE
 9-Digit SHPO Review & Compliance (R&C) Number _____
 Non-Extant (enter year) _____

1. Name of Property
 historic name Benjamin Chapel
 other names/site number Richwoods Methodist Church of Trenton Township, Richwoods Cemetery

2. Location
 street & number 1936 Franklin Avenue
 city or town Mt Pleasant vicinity, county Henry
 Legal Description:(If Rural) Township Name Trenton Twp Township No. 72 Range No. 7 Section 24 Quarter SE of Quarter NE
 (If Urban) Subdivision _____ Block(s) _____ Lot(s) _____

3. State/Federal Agency Certification [Skip this Section]
4. National Park Service Certification [Skip this Section]

5. Classification
 Category of Property (Check only one box) **Number of Resources within Property**

	If Non-Eligible Property		If Eligible Property, enter number of:	
	Enter number of:		Contributing	Noncontributing
<input checked="" type="checkbox"/> building(s)	—	buildings	1	—
<input type="checkbox"/> district	—	sites	1	—
<input type="checkbox"/> site	—	structures	—	—
<input type="checkbox"/> structure	—	objects	—	—
<input type="checkbox"/> object	—	Total	2	—

Name of related project report or multiple property study (Enter "N/A" if the property is not part of a multiple property examination).
 Title _____ Historical Architectural Data Base Number _____

6. Function or Use
 Historic Functions (Enter categories from instructions) **Current Functions** (Enter categories from instructions)
06A01: Religion / church 70: Vacant / not in use
07A: Funerary / cemetery 07A: Funerary / cemetery

7. Description
 Architectural Classification (Enter categories from instructions) **Materials** (Enter categories from instructions)
09G02: Church – gable end foundation 04C: Limestone
 walls (visible material) 02A: Weatherboards
 roof 05: Metal
 other _____

8. Statement of Significance (SEE CONTINUATION SHEETS, WHICH MUST BE COMPLETED)
Applicable National Register Criteria (Mark "x" representing your opinion of eligibility after applying relevant National Register criteria)
 Yes No More Research Recommended A Property is associated with significant events.
 Yes No More Research Recommended B Property is associated with the lives of significant persons.
 Yes No More Research Recommended C Property has distinctive architectural characteristics.
 Yes No More Research Recommended D Property yields significant information in archaeology or history.

Survey of selected rural sites

Iowa Department of Cultural Affairs
State Historical Society of Iowa

Site Number 44-01769

Iowa Site Inventory Form Continuation Sheet

Related District Number _____

Page 1

<u>Henry</u> Name of Property	<u>Henry</u> County
<u>1936 Franklin Avenue</u> Address	<u>Mt. Pleasant vicinity</u> City

This Iowa Site Inventory form was prepared for the Henry County Historic Preservation Commission as one of six properties that they identified in 2013 with potential eligibility for listing on the National Register of Historic Places. They hired consultant Rebecca Lawin McCarley to document and compile known history on the property, with limited additional research, for the purpose of conducting a preliminary formal evaluation of the significance of the property. Additional research would be required for a National Register nomination, but this documentation is intended to provide preliminary information to present to SHPO for comment to determine if they should proceed with a nomination project including this property.

7. Narrative Description

Benjamin Chapel (or Richwoods Methodist Church) sits in the southwest quarter of the northeast quarter of Section 24 in rural Trenton Township, about five miles northwest of downtown Mt. Pleasant and three miles southeast of Trenton. The church was built in 1877 on the east side of Trenton-Salem Rd, now Franklin Avenue. The church is clad in wood siding, and it sits on a stone foundation. It has a red metal roof installed within the last 10 years. The gable-front church faces west, with a bell tower on the west end of the roof. The bell tower has been clad in vinyl siding and metal roofing since 2005. The church retains two separate single-door entries with transoms on the west side. This feature is a key architectural characteristic of the church, as noted within the Statement of Significance. Each entry retains a four-panel wood door, wood surround with shoulders, and transom window with oval glass. The corner boards of the church retain simple yet refined capitals, and a wide frieze board extends under the eaves around the church. The north and south sides of the church retains three windows with wood surrounds with shoulders and four-over-four-light double-hung wood sashes. The windows were replaced in the last 10 years with windows identical in style to the original church, as noted by board members and seen in historic photographs. The east side of the church has no openings. A brick chimney is located on the roof at this end.

The interior of the church is simple with historic features intact. The church has plaster walls and ceilings, and it has a wide wood floor. Wood wainscoting extends around the interior of the church on the lower section of the walls. The front of the church is the west end, with the pulpit located on a low platform between the two entry doors. The wood pews include a divided center section and two side sections, including turned pews along the front on both sides. The pews have straight sides that wrap around to the back with a turned/rounded top as the only decorative detail. Church history notes that men used the south door and women used the north door, then sitting on those respective sides of the church. Only men sang in the choir. Kerosene lights were used to light the interior (125th Anniversary program, June 23, 2002). The piano sits in the southwest corner. Wood trim around the windows and doors remains intact as well. The brick chimney at the east end terminates high on the wall, with an old stove pipe hole visible. The church has never been modernized (no electricity, plumbing, or additions), and the intent of the association is to preserve it as the oldest "original" church in Henry County (125th Anniversary program, June 23, 2002).

A relatively large and still active cemetery sits to the east of the church, serving as the cemetery for the rural "Richwoods" community from the 1880s to the present. Originally, a cemetery was established in

Iowa Department of Cultural Affairs
State Historical Society of Iowa

Site Number 44-01769

Iowa Site Inventory Form Continuation Sheet

Related District Number _____

Page 2

<u>Henry</u> Name of Property	<u>Henry</u> County
<u>1936 Franklin Avenue</u> Address	<u>Mt. Pleasant vicinity</u> City

the 1840s at the northwest corner of the northeast quarter of Section 25 about .6 miles to the south. This cemetery is known as Old Richwoods Cemetery, with burials primarily extending from the 1840s to 1880s, as well as some later graves of family members. In 1882, the land to the east of Benjamin Chapel was bought and a new cemetery established, known as New Richwoods Cemetery. A handful of graves in this cemetery to the east of the church are noted with death dates of 1881, and the grave and marble marker for Benjamin B. Allender (name sake for the church who died on June 22, 1882) is located in row 5 as one of the earliest graves and markers in this cemetery. The church organization continues to own both cemeteries, along with the church property proper.

The frame outhouse in a 2005 photograph to the north of the church was destroyed in a wind storm around 2009. Seven grave markers were also damaged in the storm, and they have been repaired.

8. Narrative Statement of Significance

Benjamin Chapel, or Richwoods Methodist Church, appears to be individually eligible for listing on the National Register of Historic Places under Criteria A and C. The church and cemetery are significant within the social history of rural Trenton Township, specifically this area known as the "Richwoods" community or neighborhood. Additionally, the church is significant for its early religious architecture, specifically the design of the façade with two separate entries. The integrity of the exterior and interior of the church is high, and it remains on its original site. As the church is significant for its architecture and within the social history of Trenton Township, it also meets Criterion Consideration A for churches.

Benjamin Chapel is one of a handful of rural churches remaining in Henry County, and it is perhaps the oldest one on its original site. The church was built in 1877 on land donated by Joseph Black, with Benjamin Allender contributing both money and time to ensure the construction of the church. It was officially named Richwoods Methodist Church, though nicknamed and referenced as Benjamin Chapel. The church served the rural community in eastern Trenton Township as a Methodist Protestant Church for several decades, officially becoming inactive in 1916. However, the church continued to serve a key role in the Richwoods neighborhood, and the property was transferred to the Benjamin Chapel Association in 1921. Regular Sunday School classes and special services were held through 1940, with various services periodically until 1952. In 1948 a long time resident of the area noted: "Richwoods church has not ceased to be the civic and religious center of the community just as the Richwoods school is the social and educational center of the community" (C.E. Carnahan, "A Trip to the County and to Richwoods," *Mount Pleasant News*, July 24, 1948, 4). The Benjamin Chapel Association revived efforts to maintain and preserve the church in 1974. Since then, it has continued to occasionally hold sing fests, community events, and weddings, with the Richwoods-Benjamin Chapel Association maintaining both the church and cemeteries. In 1974 and 2005, Benjamin Chapel was noted as believed to be the oldest original church extant in rural Henry County. It retained its original form, with no modernization, simply repaired and painted to preserve its historical value. It continued to stands as a landmark in the area northwest of Mt. Pleasant and marker of the historic rural Richwoods community (HCHPC 2005: 345).

Iowa Department of Cultural Affairs
State Historical Society of Iowa

Site Number 44-01769

Iowa Site Inventory Form Continuation Sheet

Related District Number _____

Page 14

<u>Benjamin Chapel</u> Name of Property	<u>Henry</u> County
<u>1936 Franklin Avenue</u> Address	<u>Mt. Pleasant vicinity</u> City



Figure 3. c.1910 photograph of Benjamin Chapel (in collection of Virginia Sommerfeld)

Survey of selected rural sites



Pickle Church (Bethany Hall) – 1883



Pilot Grove Depot – 1901 / 2012

Rural sites - nominations

- Benjamin Chapel and Richwoods Cemetery
- 1877-1965
- Criterion A – social history
- Criterion C – architecture
- Listed in 2015



Rural sites - nominations

- Hugh and Matilda Boyle House and Cemetery HD
- 1847-1893 (cemetery)
c.1850 stone house
- Criterion A – settlement
- Listed in 2015



Rural sites - nominations

- Joseph and Lydia Edwards House
- circa 1866
- Criterion C – architecture – most refined of 4 stone houses in Henry Co
- Listed in 2015



Rural sites - nominations

- Owen A. and Emma J. Garretson House
- 1901-1933
- Criterion B – Owen A. Garretson – social history / historian
- Listed in 2015



Owen A. Garretson was "known all over the entire state for his contributions to the history and literature of the state" at the time of his death in February 1933

Final thoughts on surveys/nominations

- Multiple approaches
- CLG / HRDP grants & local funding / volunteers
- Surveys – create inventory of resources
- Nominations – recognize significant history and architecture in county



BS69A2

Baptist Church, Mt. Union, Ia.

Earl Mathews, Publ.

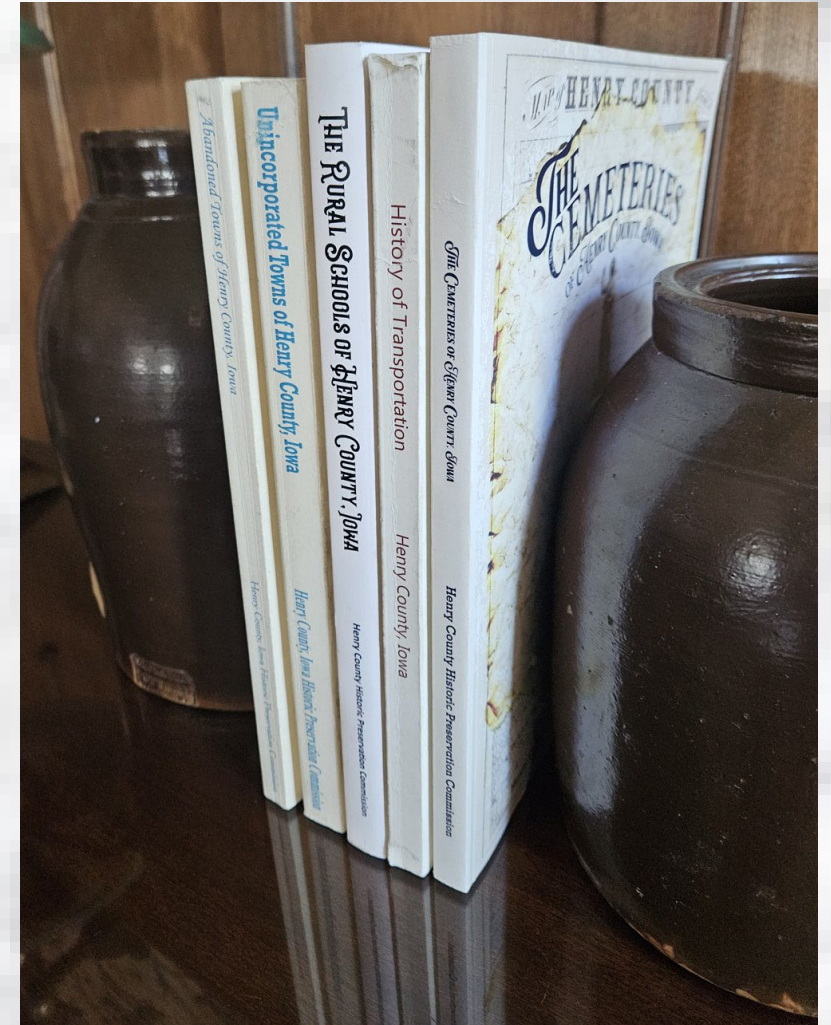
Pat White

- member of Henry Co HPC
- board member of Henry County Heritage Trust and other organizations
- research specialist



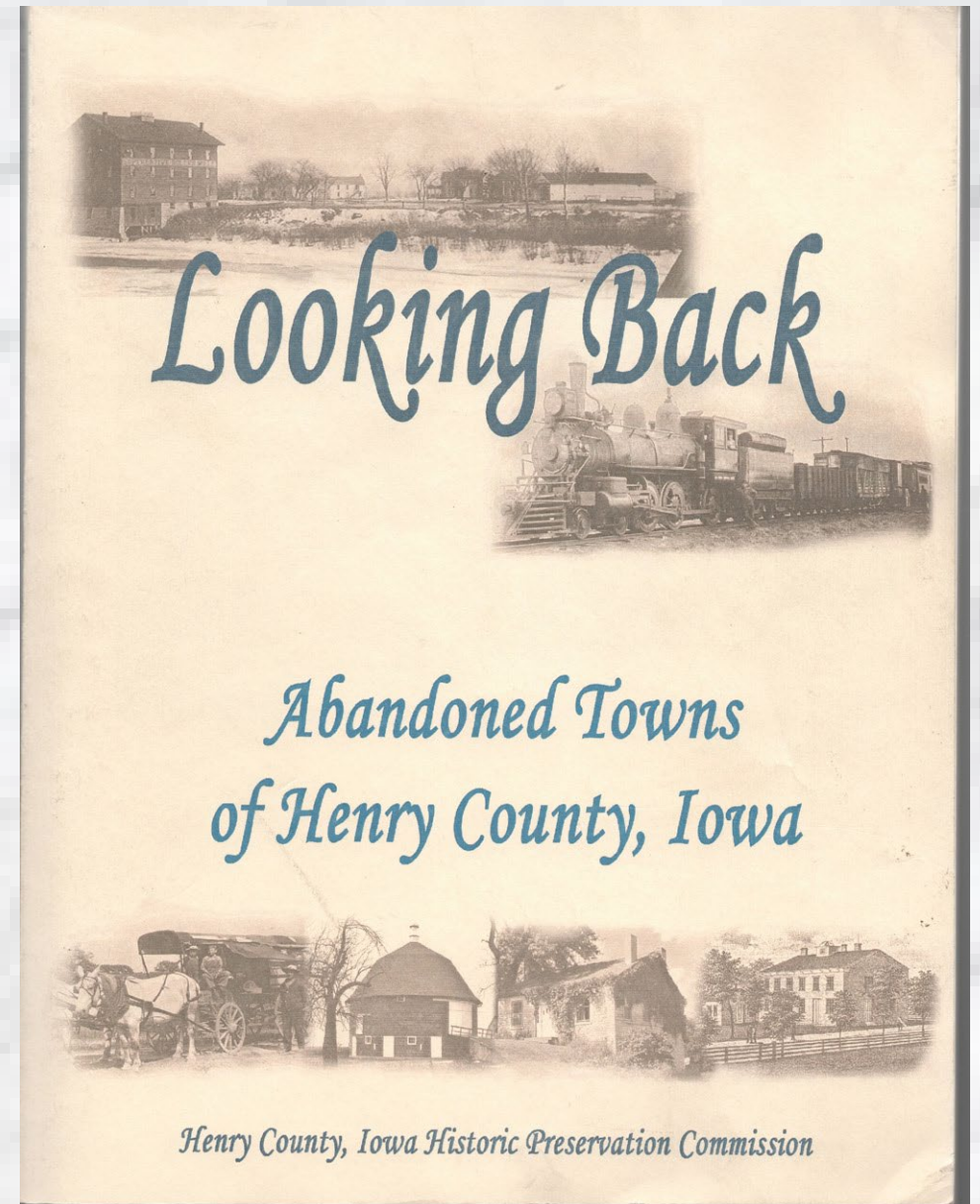
Research / book projects

- Five book projects to date
- 2004 – first book
- 2023 – most recent book
- Result of research for historic signs
- Start with donation for printing
- Creation of “book fund”

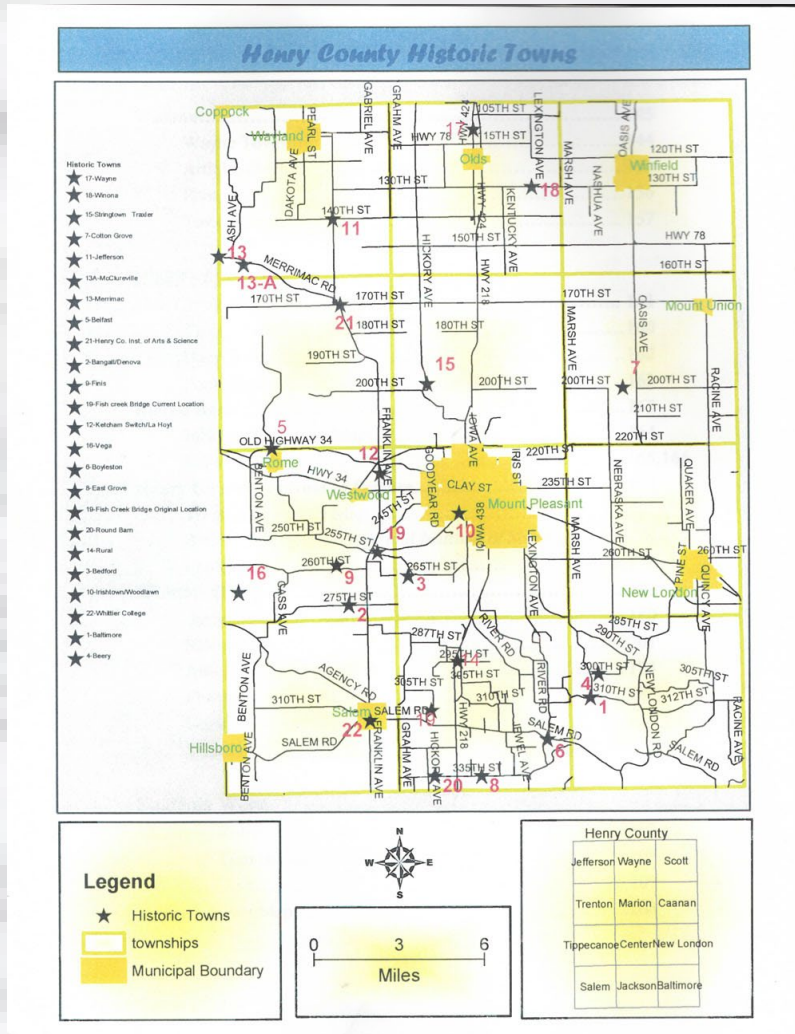


Abandoned Towns of Henry County

- First book project – completed in 2004
- Donation to print
- 210 pages - \$20
- 19 towns
- 4 historical places
- Marked with signs



Abandoned Towns of Henry County



Boyleston Bridge
West of Lowell, Iowa



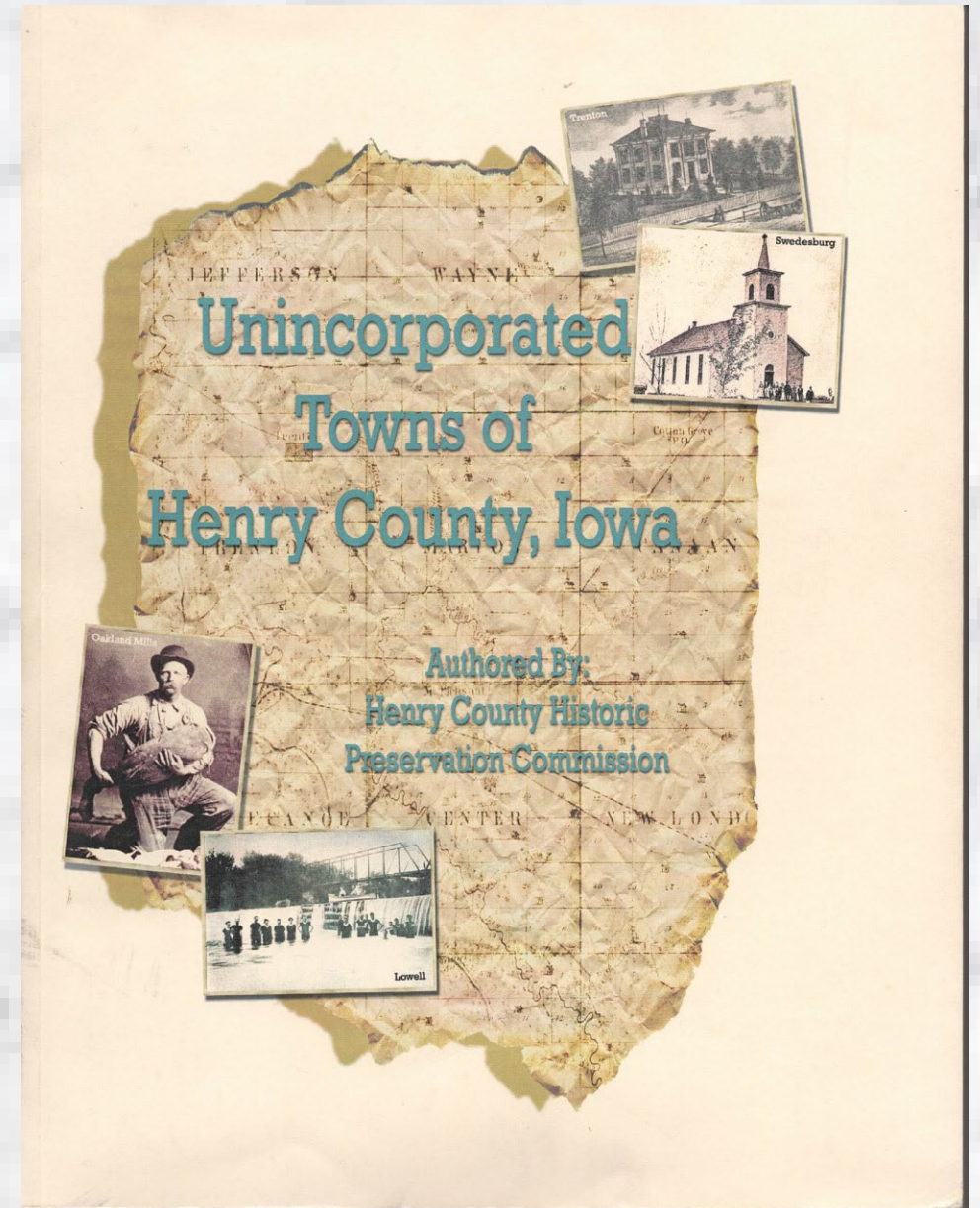
Home in Boyleston



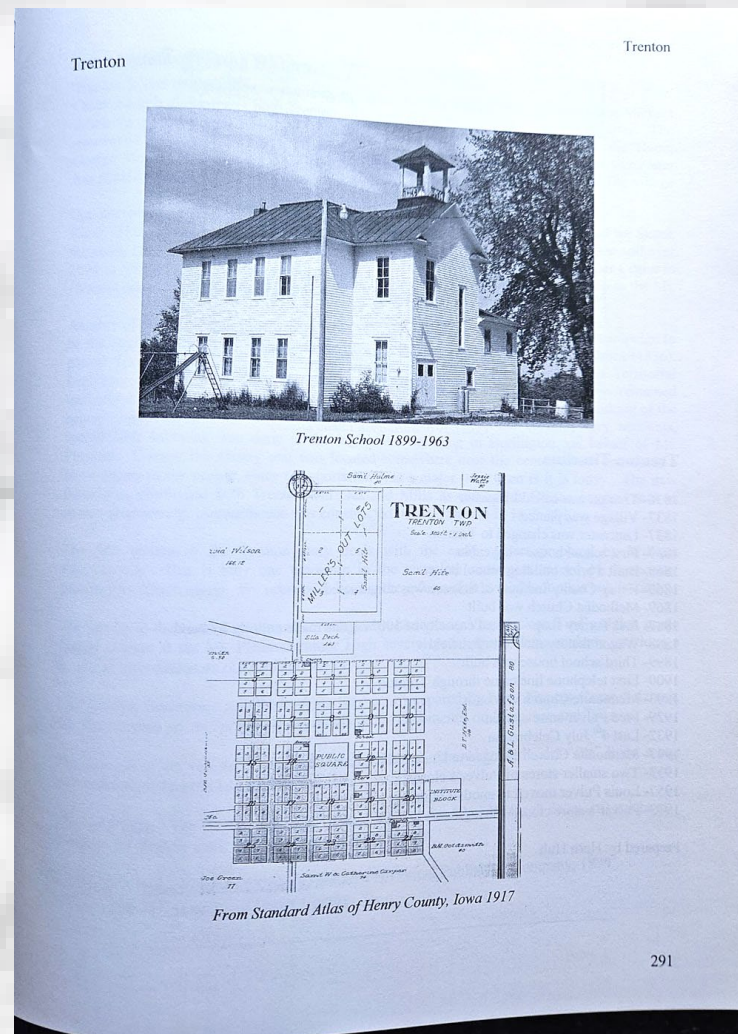
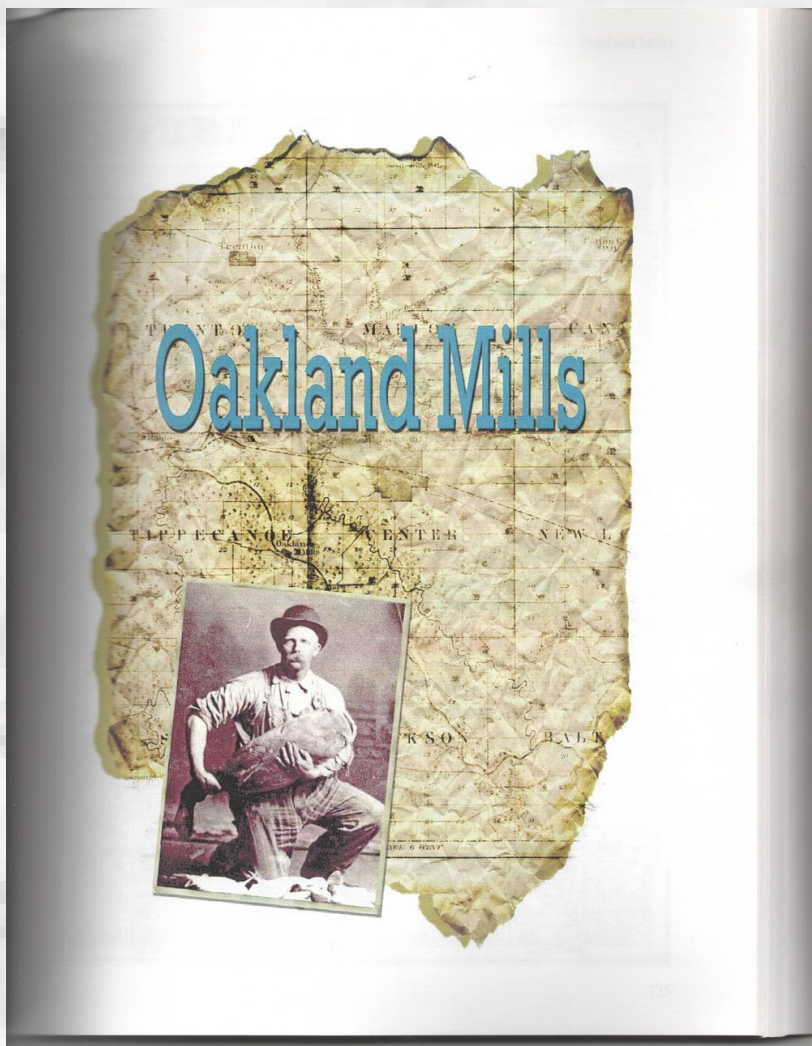
Boyleston School

Unincorporated Towns of Henry County

- 2005
- 352 pages - \$25
- Lowell
- Oakland Mills
- Swedesburg
- Trenton

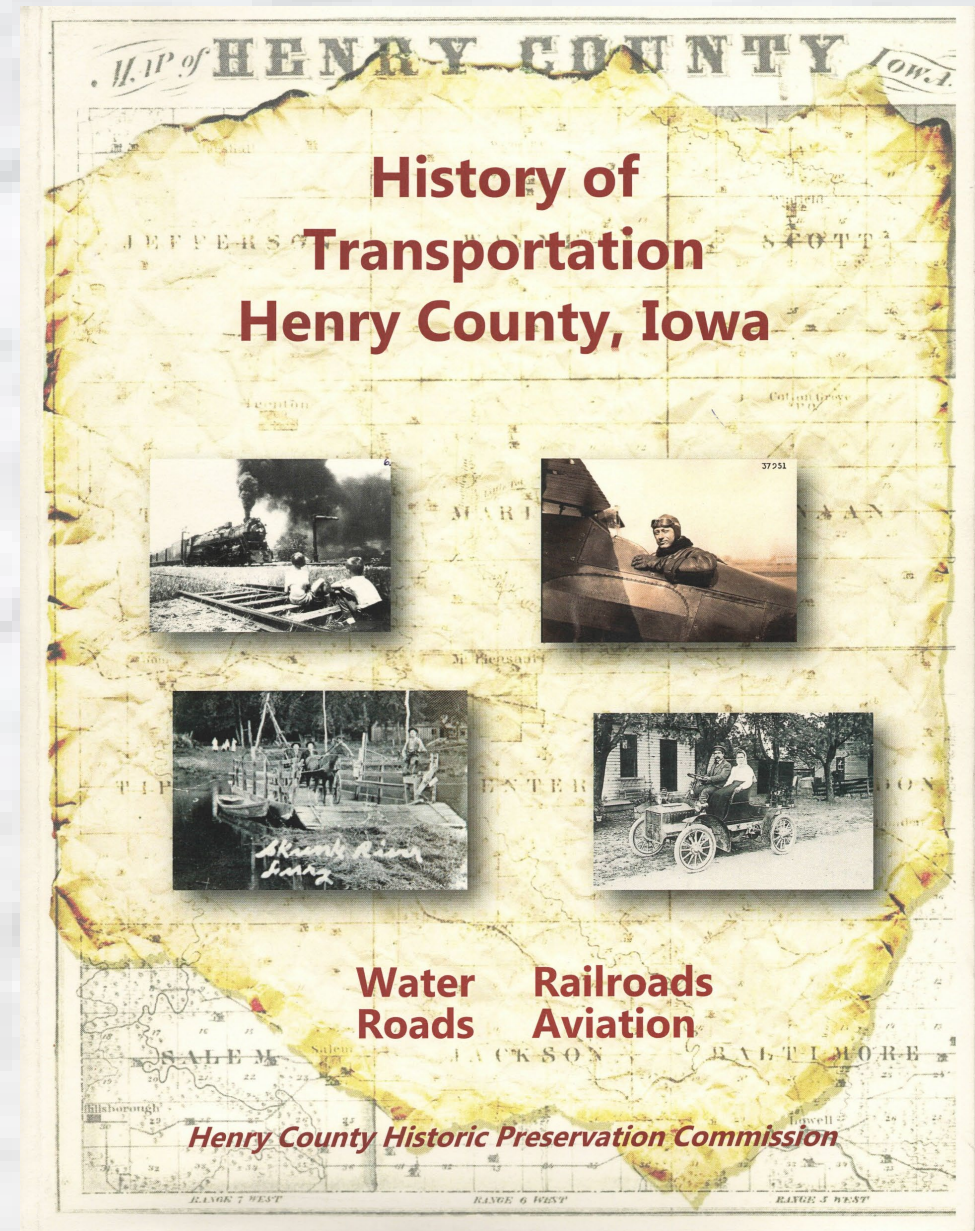


Unincorporated Towns of Henry Co

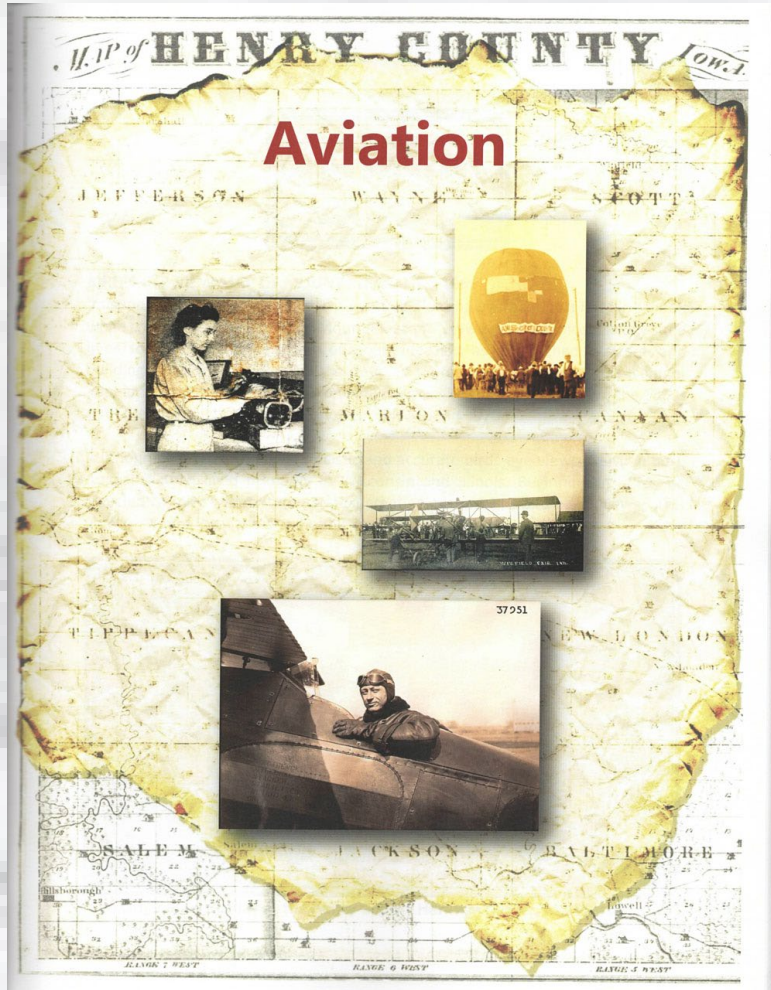


History of Transportation in Henry County

- 2015
- 274 pages - \$29
- Water
- Roads
- Railroads
- Aviation



History of Transportation in Henry Co



Blue Bird Bus Company

Blue Bird Corporation, founded in 1932 in Fort Valley, GA, still is in operation, and manufactures school buses for more than 60 countries. In 1962, the Blue Bird Midwest plant opened in Mt. Pleasant, on West Washington Street. When the plant closed in 2002, 350 jobs disappeared. Former Blue Bird workers continue to gather and reminisce about their time at the Mt. Pleasant plant.



September 1961:

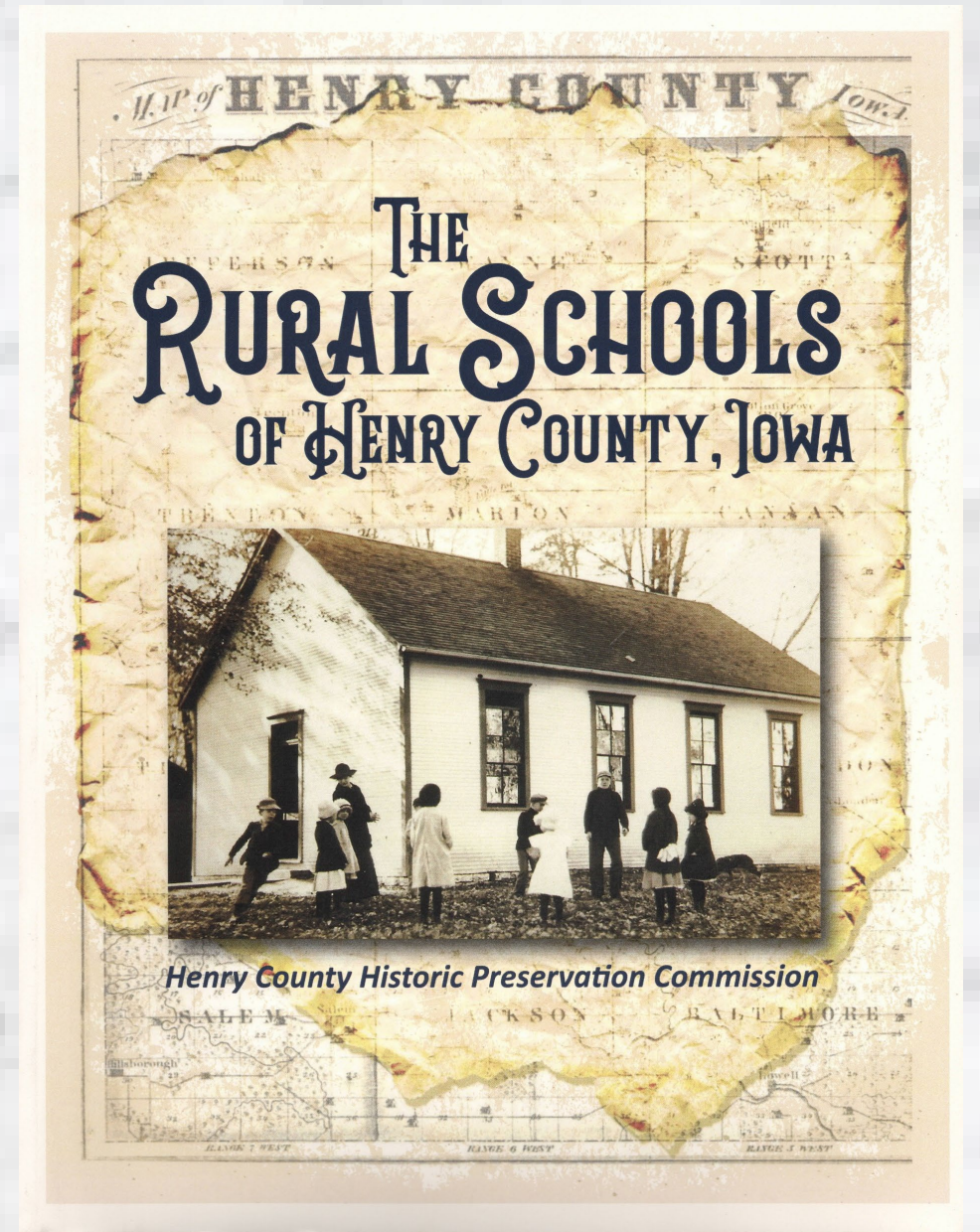
L to R: Karl Smith, Frank DeLucia, Don Atkinson & Mgr. John Harris.



1970s Aerial View of Blue Bird Midwest

Rural Schools in Henry County

- 2021
- 296 pages - \$35 (\$32)
- Chronology of schools
- Map of schools
- History / consolidation
- Extant schools
- Schools by township



Rural Schools of Henry Co

Rural Schools of Henry County, Iowa

TABLE OF CONTENTS

Foreword and Dedication

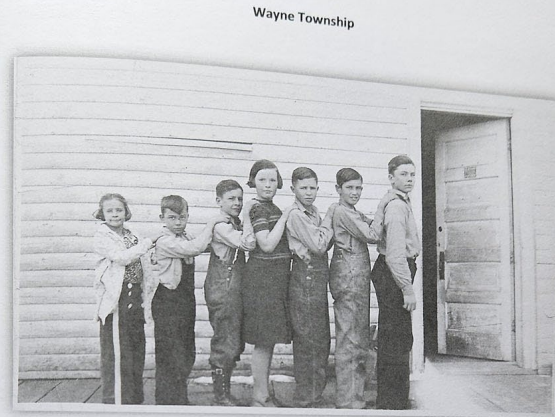
Rural Schools of Henry County

Henry County Rural Schools – Introduction and Overview	1
Chronology of Henry County Rural Schools	4
Maps and School Districts	6
List of Henry County Rural Schools	11
County Superintendents	13
Rural School Teachers	17
Eighth Grade Graduation	27
Consolidation and Consolidated School Districts	37
Sale of School Buildings, Procedure and Proceeds	39
Rural School Buildings Still Standing	43

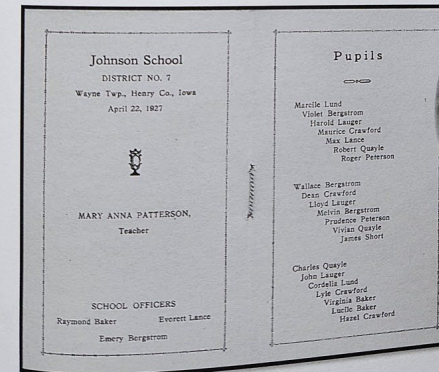
Schools by Township

Baltimore	47
Canaan	69
Center	91
Jackson	113
Jefferson	135
Marion	155
New London	169
Salem	183
Scott	205
Tippecanoe	229
Trenton	249
Wayne	269

Resources and References	293
--------------------------------	-----



Johnson/Star #7, 1936-37 School Year. L to R: Mary Lou Baker, Blaine Palm, James Baker, Lois Miller, Eugene Baker, Junior (Ed) Saltzman, Richard Palm. Teacher: Miss Elsie Scarff.



Teacher's end-of-year souvenir for the 1926-27, Johnson School #7 year, given to Max Lance. Courtesy of his son, David Lance.

Cemeteries of Henry Co

2023 Henry County Historic Preservation Commission



The 2023 Henry County Historic Preservation Commissioners are (Left to Right): Judy Rawson, Pat White (Treasurer), Johanna Crawford, Cathie Schreiner, Caroline Lehman (Vice Chair), Larry D. Roth, Joel Garretson (Chair) and Mary Savage (Secretary). Absent: Chad Brousseau and Martha Francy.

2023 Henry County Pioneer Cemetery Commission



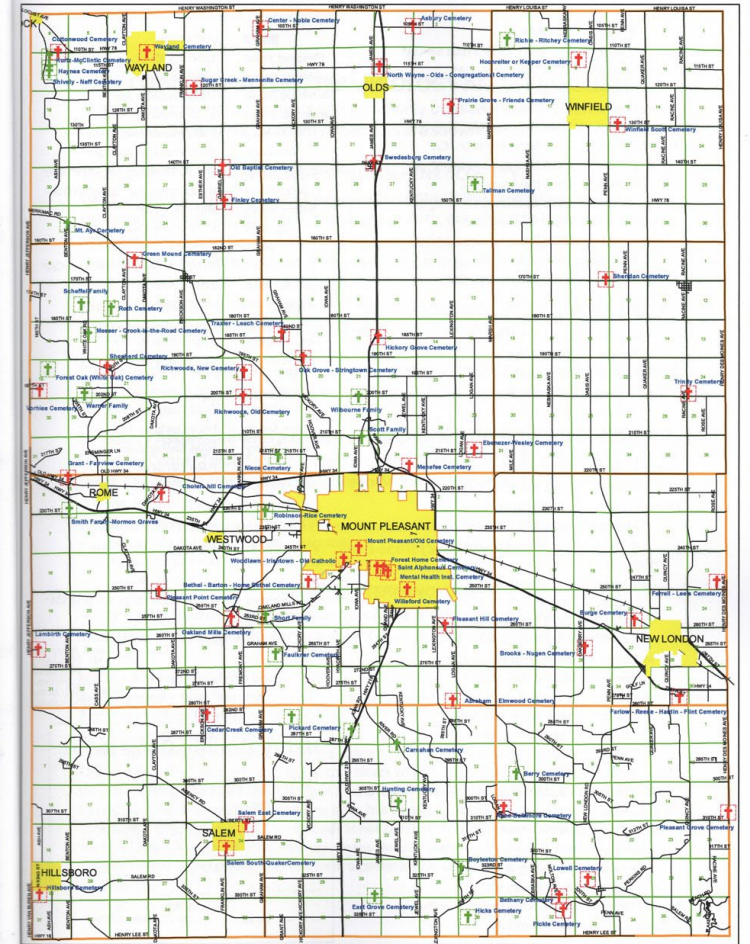
The 2023 Henry County Pioneer Cemetery Commissioners are (Left to Right): Back, David Gates, Mona Gates (Historian), Pamela Stewart (Secretary) Charlotte Zihlman, Phil Hassenfritz and Pat White (Vice Chair). Front, Debbie VanDerSnick (Chair), Sharon Walden, Rami Ridinger and Anna Carlson. Absent: Jeff Shatzer.

Cover Photo: White Bronze Monument of Gov. J.G. Newbold (1830-1903).

THE CEMETERIES OF HENRY COUNTY, IOWA

Table of Contents

Foreword	1
About this Book	1
Maps and List of Cemeteries	4
Cemetery Styles, Terminology and Symbols	9
Undertakers and Monument Makers	
Undertakers, Coffin Makers and Funeral Homes.....	17
Monuments, Granite and Marble Works	28
Woodmen of the World - Tree Stump Markers	33
White Bronze Monuments	36
Notable Folks and Unusual Burials	39
Military	
National Cemeteries	43
Military Markers in Henry County	45
Iowa Pioneer Cemeteries	79
Henry County Pioneer Cemetery Commission	80
Cemeteries by Township	
Baltimore	85
Canaan	95
Center	101
Jackson	127
Jefferson	135
Marion	149
New London	167
Salem	175
Scott	183
Tippecanoe	189
Trenton	201
Wayne	217
Rumored Burial Sites and Unknown Locations	225
Resources and References	231
Index of Cemeteries	233
Epitaphs.....	18, 35, 38, 42, 126, 134, 163, 166, 200, 224, 229, 230



Structure of book projects

- Choose a topic
- Researching
- Compiling information
- Writing the books
- Publishing

print**group**USA

CREATIVE • PRINT • MAIL
BOOK PUBLISHING • PROMOTIONS

MT. PLEASANT NEWS

Wednesday, February 23, 2022

Book highlights one-room schools in Henry County

By **Michelle Hillestad**, Southeast Iowa Union

When we think of one-room school houses, we tend to think of days gone by and of walking miles and miles to school to attend classes. These are all true of school houses all across Iowa and the Midwest, and even in Henry County. The Henry County Historic Preservation Commission has published a book titled "Rural Schools of Henry County" that gives a look into the structure of rural schools located in Henry County.

The book covers 12 townships and their one room schools. The people of Henry County have always been known for their importance placed on education, and the Mt. Pleasant area was known as the "Athens of Iowa" in its day.

The Henry County Historic Preservation Commission is a group that is dedicated to preserving the history of Henry County. They come from different parts of the county, and are representative of the various museums and areas of the county.

► **SCHOOLS, PAGE 3U**

Marketing the books

- Auditor's office
- Local museums
- Newspaper articles
- Radio announcement
- Signs around towns
- Social media

Page 6 *Winfield Beacon/Wayland News*

Thursday, December 16, 2004

Henry County Historic Preservation

Members of the Henry County Historic Preservation Commission, at their November meeting, approved a third printing of the book, **LOOKING BACK, ABANDONED TOWNS OF HENRY COUNTY, IOWA**. The book has been very popular, and the first two printings of 200 copies each have almost been sold out. The third printing should be available in mid-November. The books will be available at Drugtown, U S. Bank, Wayland Bank, Visitors and Convention Bureau (all in Mt. Pleasant), the Swedish-American Museum in Swedesburg, Dover Museum in New London, and Pork's Restaurant in Winfield.

Lessons learned from book projects

- Do you REALLY want to do this?
- 2-3 point people
- Consistency!
- Sources
- Satisfaction



Joel Garretson

- chairperson of Henry Co HPC
- member of HPC since 2010
- owner of East Grove Farms
- Garretson family farm since 1837



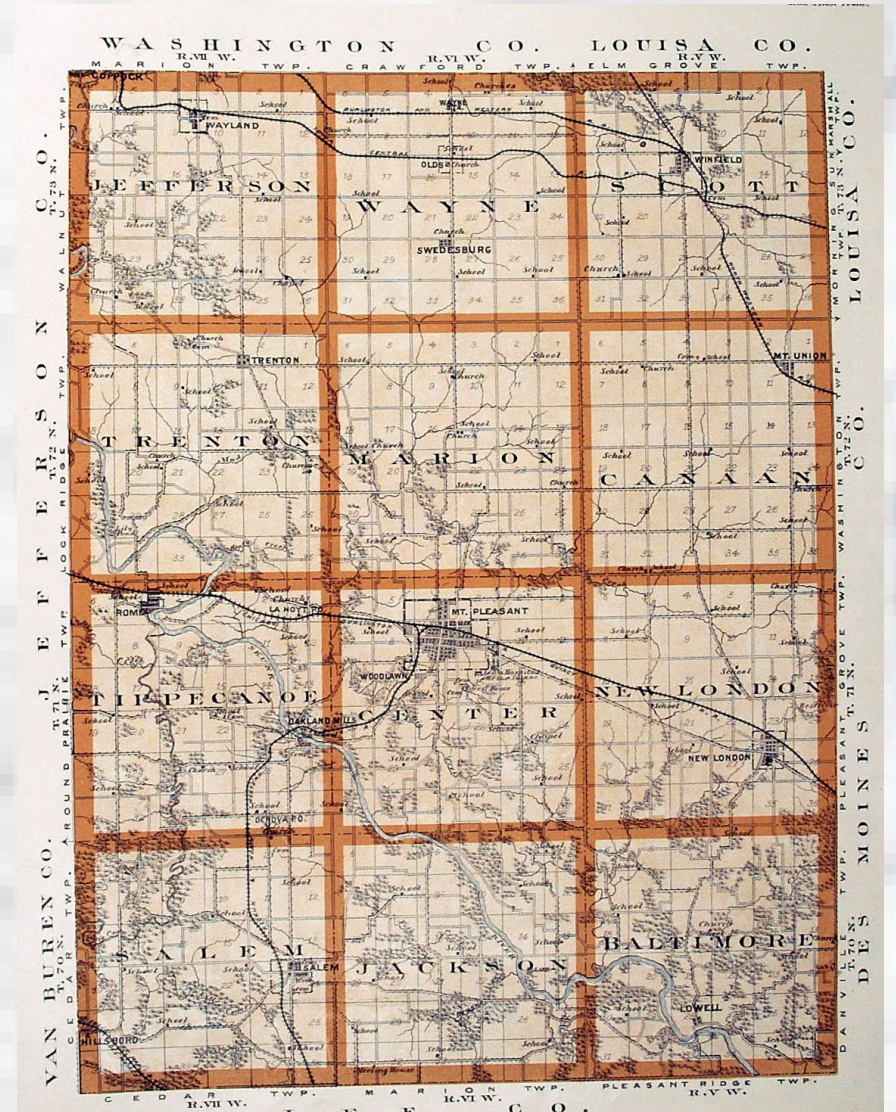
Miscellaneous other activities

- Newspaper columns
- Section 106 / transportation projects - review of historic property impacts
- Support for other county projects
- Funding for other organizations and local projects



Potential future projects

- Research into abandoned railroad lines – develop into interpretative project
- Future survey projects – new areas in other townships, intensive level surveys



Potential future projects

- Future nomination projects – sites from past survey projects, as well as new sites
- Future book projects
- Support of preservation and rehabilitation projects in county



Reflections on 30 years

- Successful work in historic preservation in Henry County
- Several awards
- Volunteers willing to assist with projects
- Recruiting of younger members



30 Years of Historic Preservation in Henry County

Henry County Historic Preservation Commission

Preserve Iowa Summit

June 7, 2024